



Specifications and technical data are subject to change without notice.  
Please contact to confirm relevant information on ordering.

📍 No.18, Gutang Rd, Shanghai 201209, China  
 ☎️ +86 21 5032 0898  
 📠 +86 21 5032 0828  
 ✉️ info@ebasee.com  
 🌐 www.ebasee.com



Copy right reserved EBS.NO.2021001

**Ebasee**  
Smart Living Green Ebasee



**CONTROL ELECTRIC**



# COMPANY PROFILE

As a leading supplier in the low voltage electrics industry, Shanghai Ebasee Electric Co., Ltd. products have been used for residential, commercial and industrial applications with its quality and service. EBASEE brand is recognized for its quality and reliability in an ever-increasing number of markets worldwide. So far EBASEE products have been approved by international labs including BV, TUV, Intertek, with KEMA, CB, SEMKO, RoHS, CE, and CCC etc.

With qualified raw materials and components supply, all products are manufactured by EBASEE's defined international specifications. We have 4 semi-auto production lines, up-to-date quality control facilities, well-trained and experienced workers. Moreover, with a technical R & D team and fully equipped in-house laboratory, EBASEE factory can carry out efficient new products development, daily production and QC.

EBASEE have a wide range of cooperations with world leading companies in new products development, OEM and ODM cooperation. Meanwhile, we process the idea of green and smart energy, working with universities such as Xi'an Jiao Tong University to get more intelligent and environmental electric solutions.

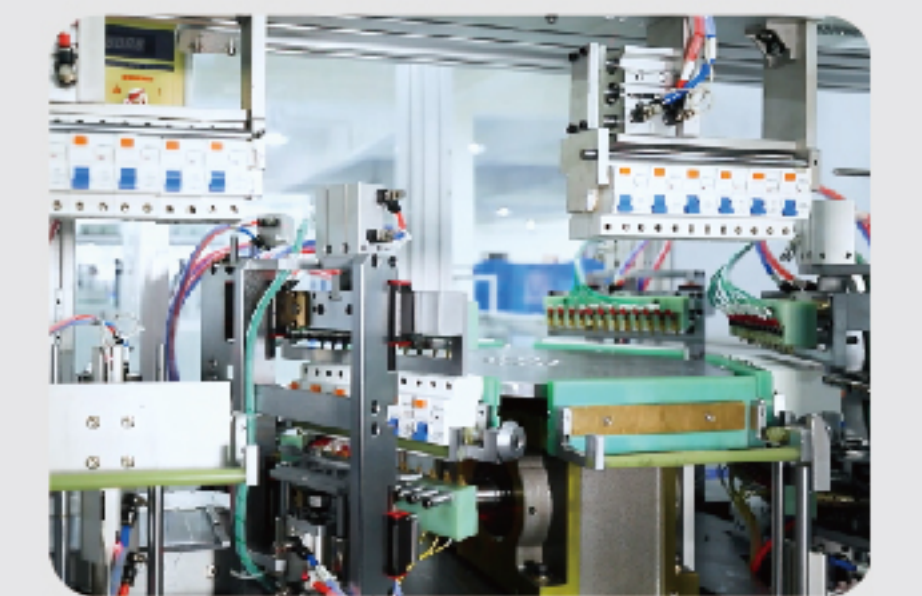
EBASEE focused on achieving growth through the success of worldwide partners. Guided by the philosophy of "market-oriented", powered by the idea of "Quick response and flexible supply", EBASEE support our worldwide partners to compete against established global players, to deliver the most systematic and cost-effective products and service in the market.

"Smart life, Green EBASEE"



Quality is our culture!

## PRODUCTION LINE

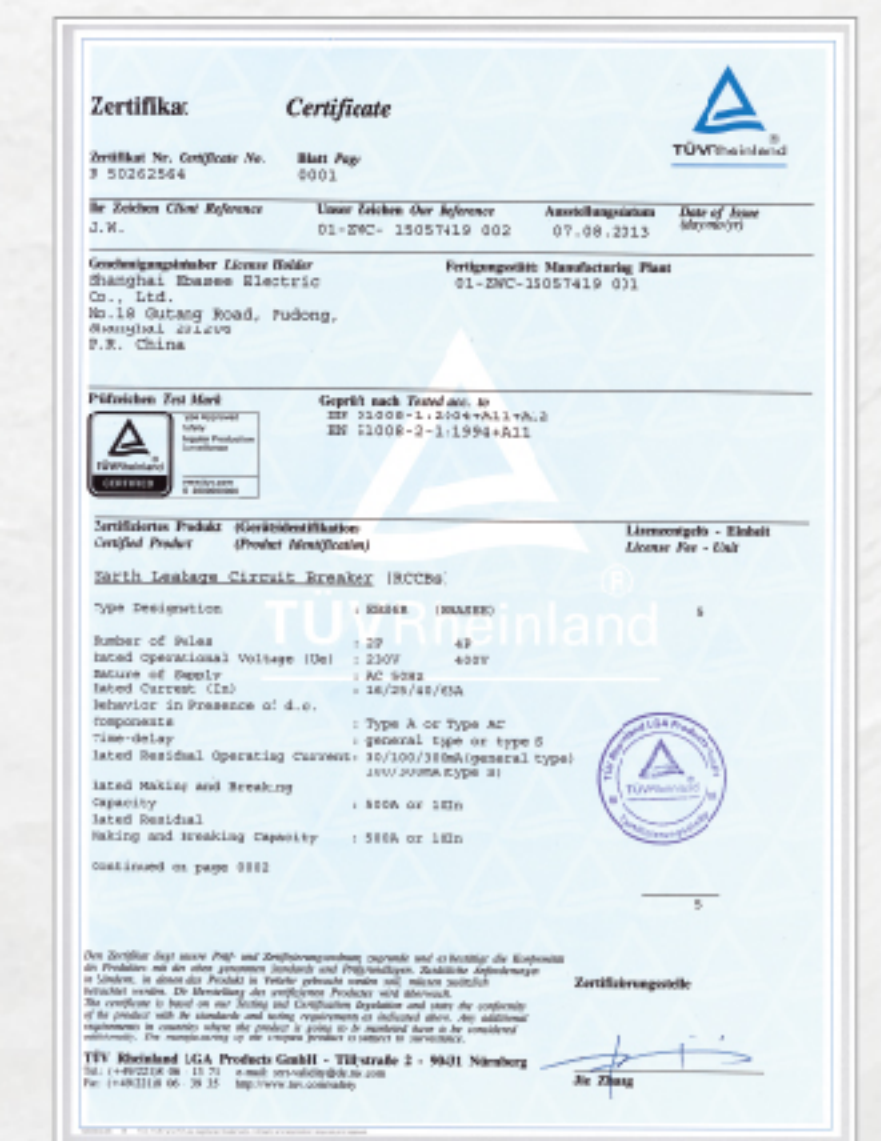
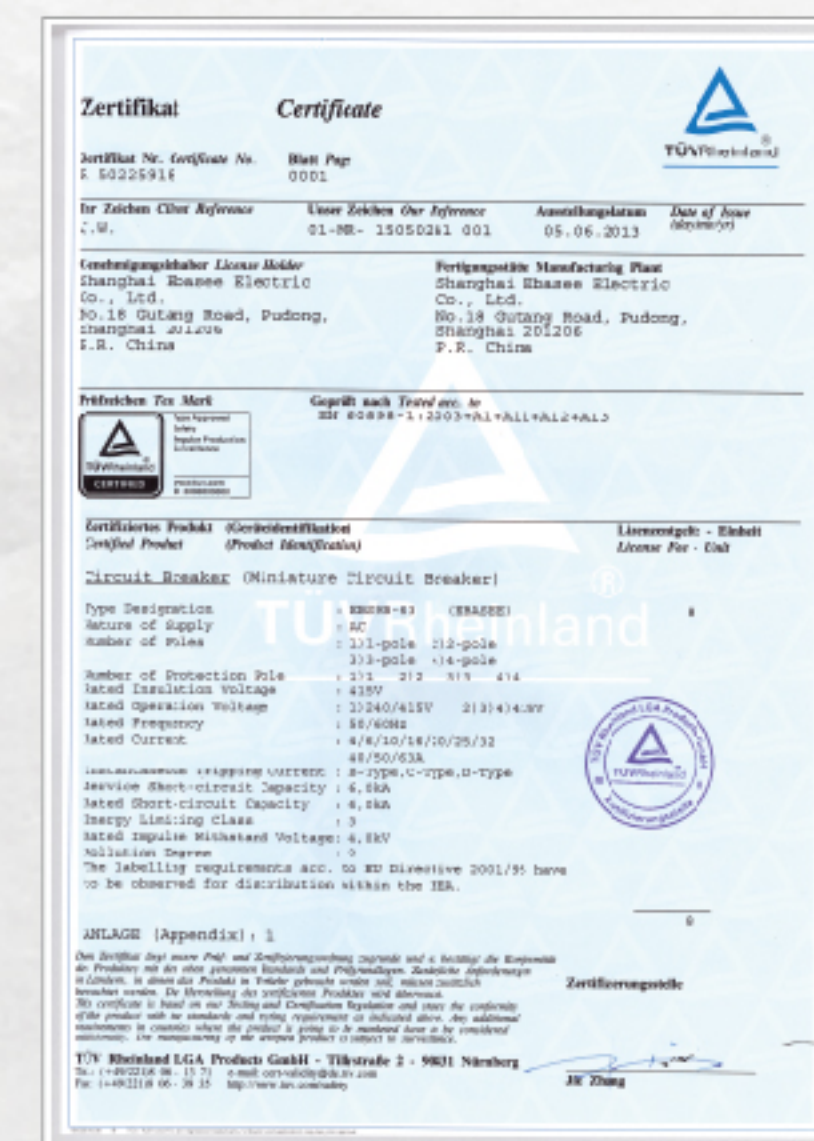
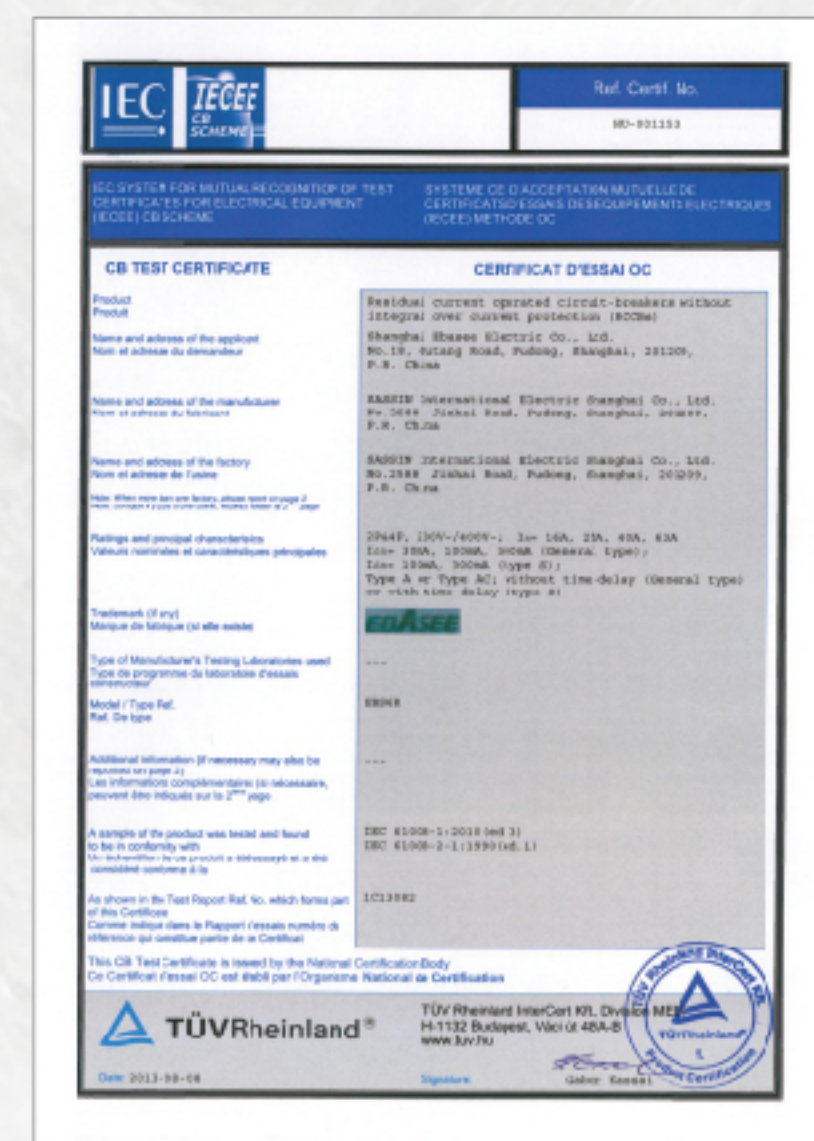
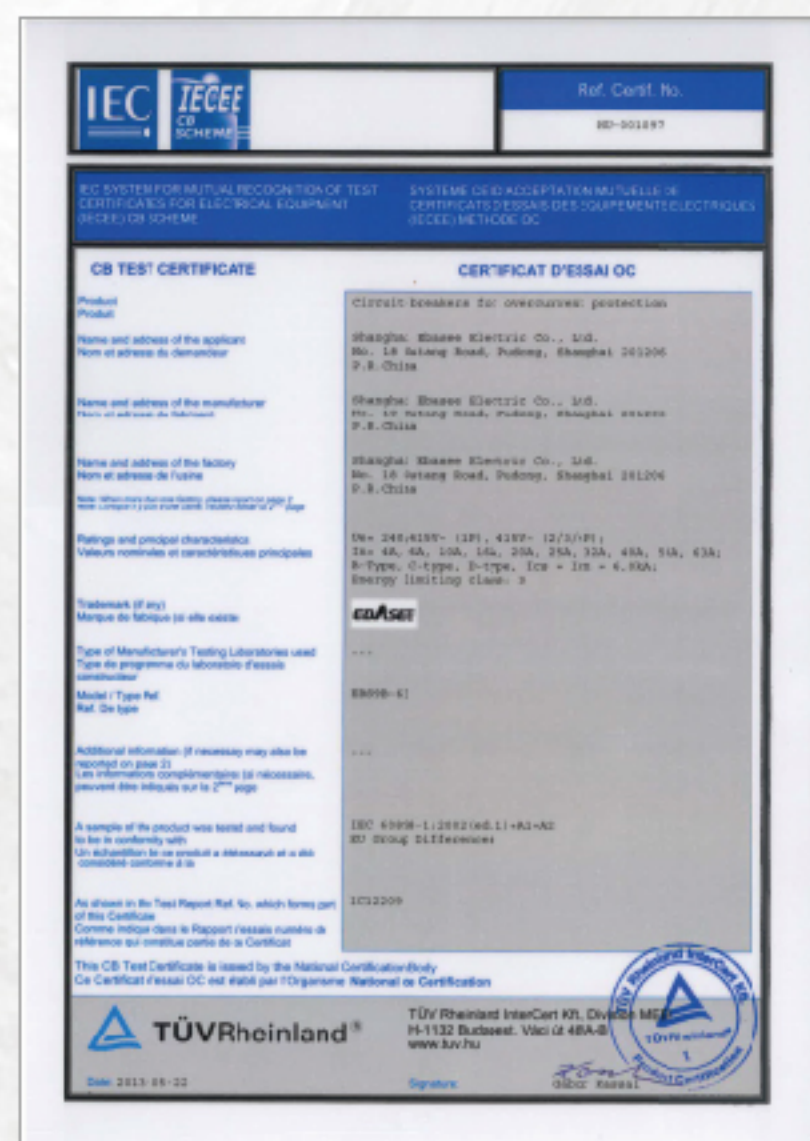
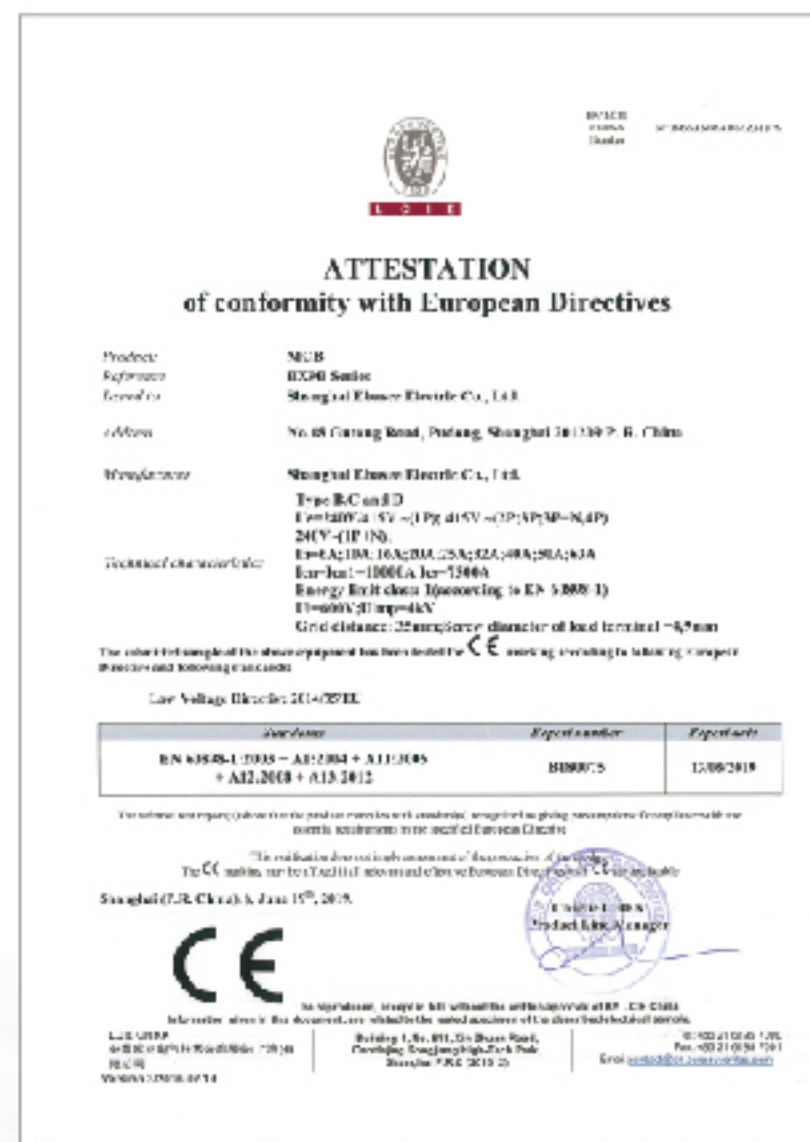


# SMART LIVING GREEN EBASEE



## INTERNATIONAL QUALITY CERTIFICATE

EBASEE products have been approved by international labs including BV, TUV, Intertek, with KEMA, CB, SEMKO, RoHS, CE, and CCC etc.



## 1.Application

EP control and load switches feature small volume and good connecting and breaking capacity mainly used in switch cabinet or three-phase asynchronous motors reversing and main circuit and auxiliary circuit switching.  
The products comply with GB14048.3 and IEC60947-3.



## 2.Working Condition

- Recommended Ambient temperature -5℃ to 40℃.
- Installation altitude: ≤2000m
- Relative atmosphere humidity do not exceed 50% when the highest temperature is +40℃. At lower temperature, higher humidity can be allowed. For example, humidity can reach 90% when temperature is 20℃. Special measures should be taken when the congealed dew appears on the surface caused by the change of temperature.
- EP series control and load switches have complete specific-ation from 20A to 160 A.
- EP series control and load switches feature small volume, multi-function, compact structure, excellent materials, good insulation, reliable performance. EP-20, EP-25 switches have finger protection function.

## 3.Classification

- Classified by Utilization:Control and loadswitch, Motor switch, Control switch.
- Classified by operation: Limited movement, Spring return, Limited movement with spring return.
- Classified by Contact System: Switch with limited movement has 1-12 poles, Switch with spring return has 1-13 poles, Motor switch has 1-6 poles.
- Classified by Rotating Angle: 45°, 90°.
- Classified by Panel: Small panel, large panel .
- Classified by Operation Method and Position of Handle:( see table 1).

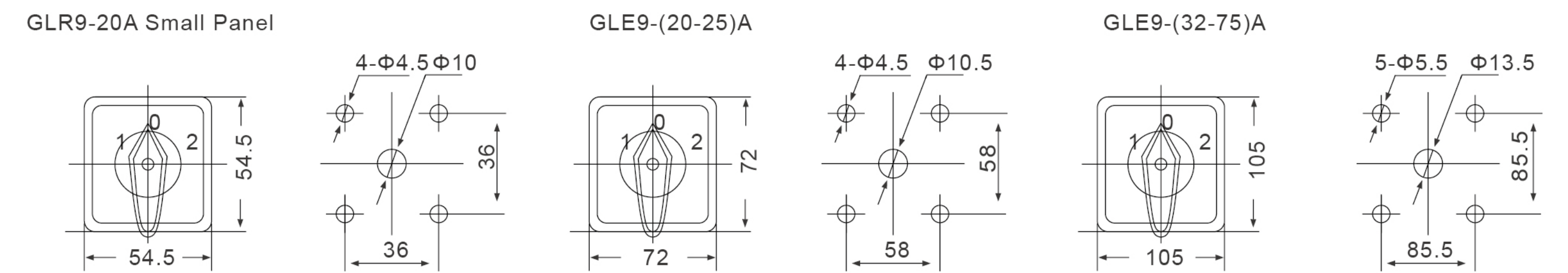
Table1

Operation	Character code	Position of handle			
Spring return method	A	0° 30°	0° 45°		
	B	30° 0° 30°	45° 0° 45°		
Limited movement	C	0° 30°	0° 45°	0° 60°	0° 90°
	D	30° 0° 30°	45° 0° 45°	60° 0° 60°	90° 0° 90°
	E	30° 0° 30° 60°	45° 0° 45° 90°	90° 30° 30° 90°	90° 0° 90° 180°
	F	60° 30° 0° 30° 60°	90° 45° 0° 45° 90°	90° 30° 30° 90° 150°	
	G	60° 30° 0° 30° 60° 90°	90° 45° 0° 45° 90° 135°	150° 90° 30° 30° 90° 150°	
	H	90° 60° 30° 0° 30° 60° 90°	135° 90° 45° 0° 45° 90° 135°		
	I	90° 60° 30° 0° 30° 60° 90° 120°	135° 90° 45° 0° 45° 90° 135° 180°		
	J	120° 90° 60° 30° 0° 30° 60° 90° 120°			
	K	120° 90° 60° 30° 0° 30° 60° 90° 120° 150°			
	L	150° 120° 90° 60° 30° 0° 30° 60° 90° 120° 150°			
	M	150° 120° 90° 60° 30° 0° 30° 60° 90° 120° 150° 180°			
N		45° 45°	30° 30°		
Limited movement with spring return	Z	30° 0° 60°	90° 0° 45°		
			135° 90° 0° 45°		

## 4.Specifications

Type	Ith A	Ui V	Ue V	AC-21A Ie A	AC-22A Ie A	AC-23A Ie A	AC-2 Ie P A kW	AC-3 Ie P A kW	AC-4 Ie P A kW	AC-15 Ie A	DC-13 Ie A				
EP-20	20	660	440	20	20	15	7.5	15	7.5	11	5.5	3.5	1.5	4	-
		660	240							5		1		5	
EP-25	25	660	440	25	25	22	11	22	11	15	7.5	6.5	3	5	1.5
		660	240							8		9			
EP-32	32	660	440	32	32	30	15	30	15	22	11	11	5.5	6	11
		660	240							14		25			
EP-75	75	660	440	75	75	72	30	72	30	32	24	23	11.5		60
		660	120												
EP-125	125	660	440	125	125	90	45	90	45	36	45	30	18.5		
Operation recurrent number	No-load													Electrical Life	
	On-load													20x10 <sup>4</sup>	6x10 <sup>4</sup>
	Total													60x10 <sup>4</sup>	

## 5.Mounting Dimensions



## 6.Order Note

Following items should be marked when ordering	Ordering sample
Product name and model	To order EP Universal changover switch, quantity is 1000 pieces,
Rated current	should be marked:
Setting current range	Universal changover switch EP 1000pcs.
Quantity	