



Specifications and technical data are subject to change without notice.  
Please contact to confirm relevant information on ordering.

📍 No.18, Gutang Rd, Shanghai 201209, China  
 ☎️ +86 21 5032 0898  
 📠 +86 21 5032 0828  
 ✉️ info@ebasee.com  
 🌐 www.ebasee.com



Copy right reserved EBS.NO.2021001

**Ebasee**  
Smart Living Green Ebasee



**CONTROL ELECTRIC**





# COMPANY PROFILE

As a leading supplier in the low voltage electrics industry, Shanghai Ebasee Electric Co., Ltd. products have been used for residential, commercial and industrial applications with its quality and service. EBASEE brand is recognized for its quality and reliability in an ever-increasing number of markets worldwide. So far EBASEE products have been approved by international labs including BV, TUV, Intertek, with KEMA, CB, SEMKO, RoHS, CE, and CCC etc.

With qualified raw materials and components supply, all products are manufactured by EBASEE's defined international specifications. We have 4 semi-auto production lines, up-to-date quality control facilities, well-trained and experienced workers. Moreover, with a technical R & D team and fully equipped in-house laboratory, EBASEE factory can carry out efficient new products development, daily production and QC.

EBASEE have a wide range of cooperations with world leading companies in new products development, OEM and ODM cooperation. Meanwhile, we process the idea of green and smart energy, working with universities such as Xi'an Jiao Tong University to get more intelligent and environmental electric solutions.

EBASEE focused on achieving growth through the success of worldwide partners. Guided by the philosophy of "market-oriented", powered by the idea of "Quick response and flexible supply", EBASEE support our worldwide partners to compete against established global players, to deliver the most systematic and cost-effective products and service in the market.

"Smart life, Green EBASEE"



Quality is our culture!

## PRODUCTION LINE



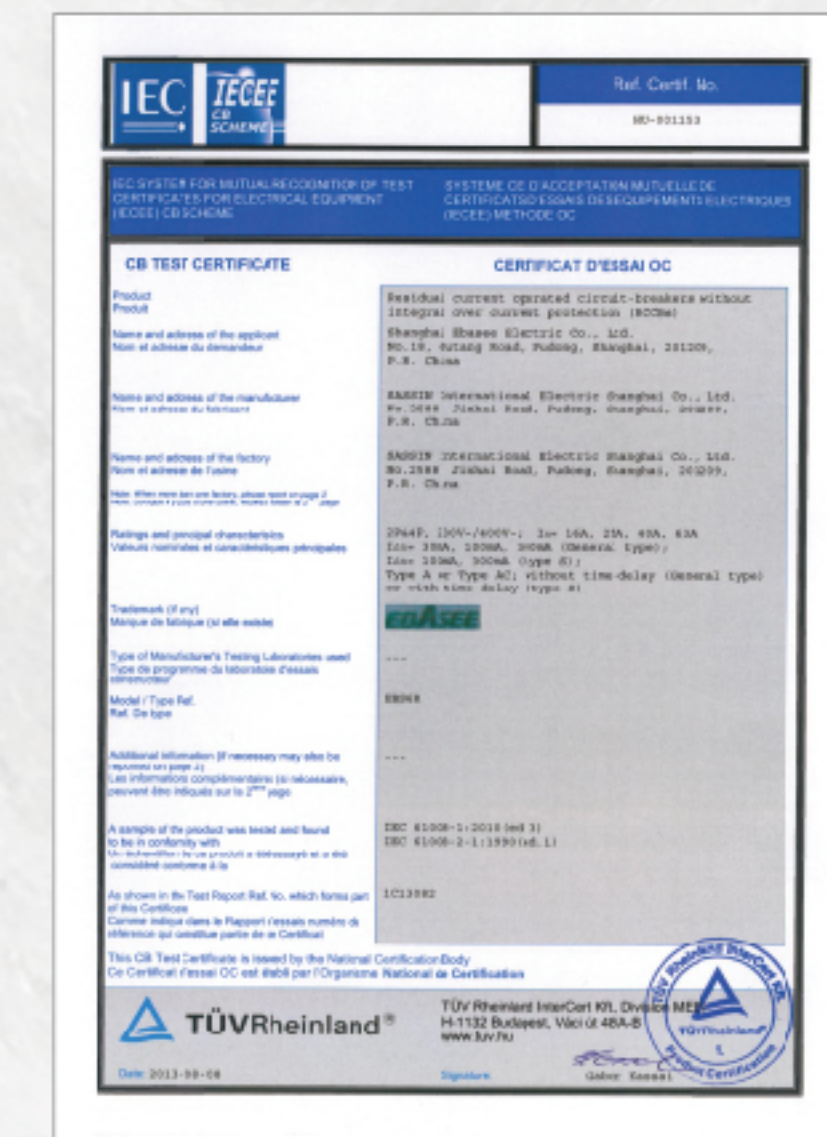
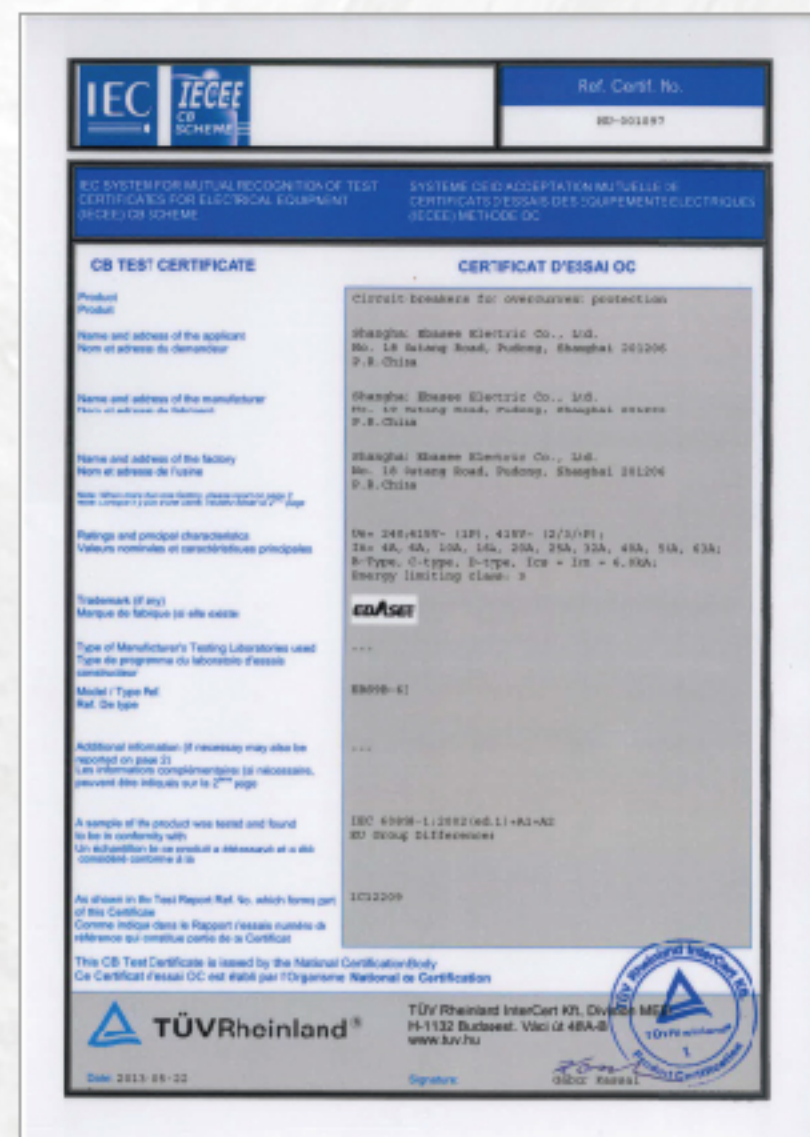


# SMART LIVING GREEN EBASEE

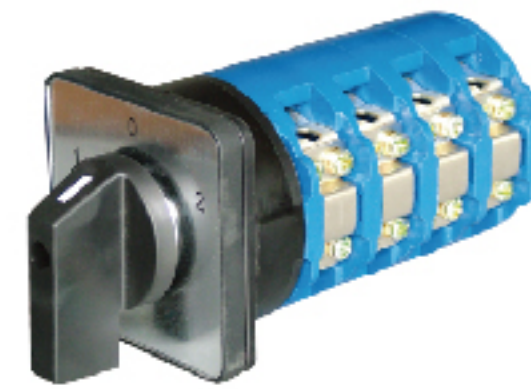


## INTERNATIONAL QUALITY CERTIFICATE

EBASEE products have been approved by international labs including BV, TUV, Intertek, with KEMA, CB, SEMKO, RoHS, CE, and CCC etc.





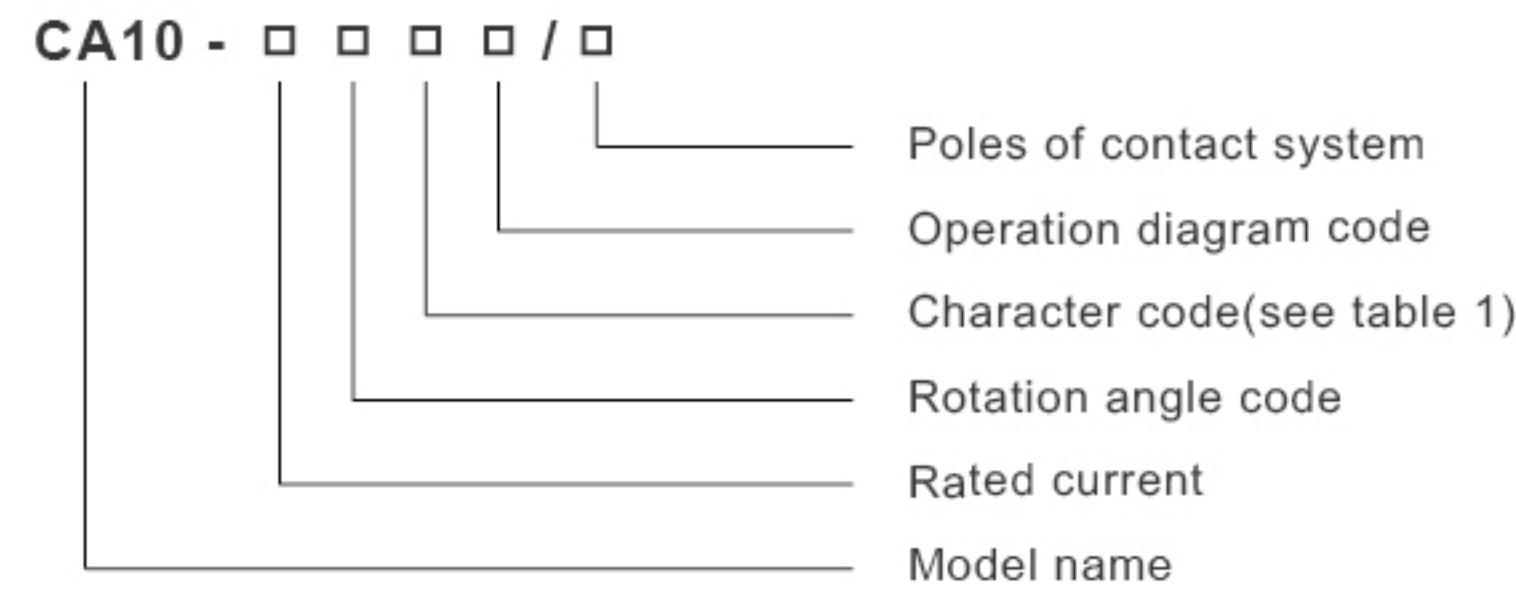


### 1.Application

CA10 series control and load switches offer a solution for most cam switch operations. Different types can be used as control switches, switches to be installed in equipments and switches for motor control according to IEC60947-3. This range offers current capacity from 20A to 160A.

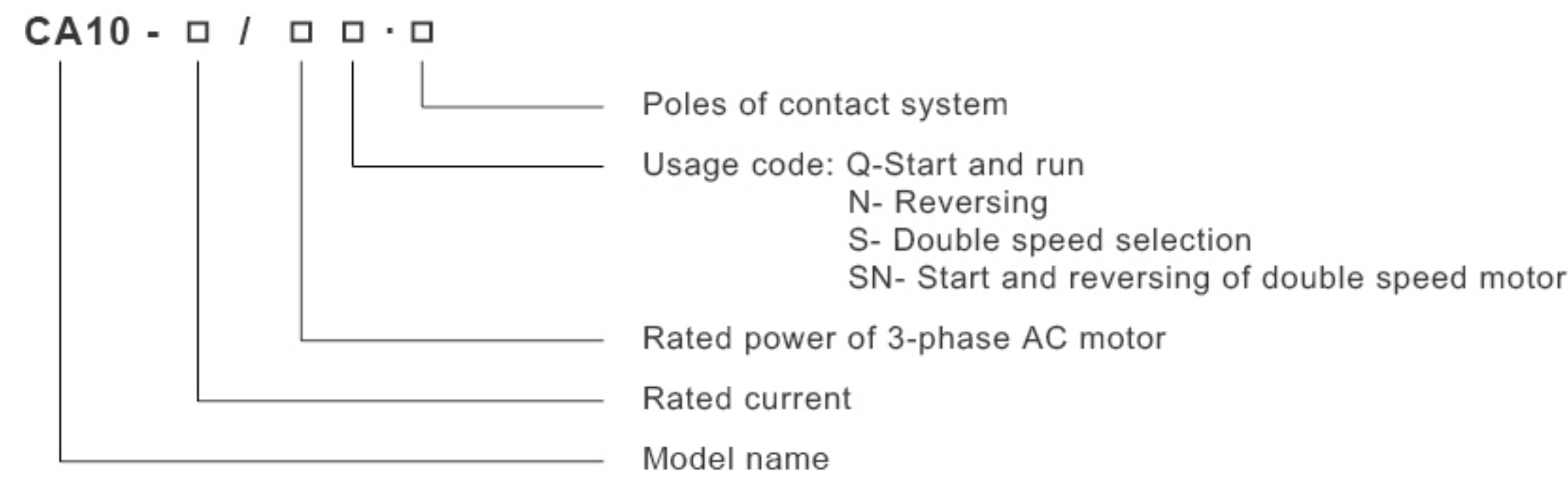
### 2.Nomenclature

#### Use as Control Switch



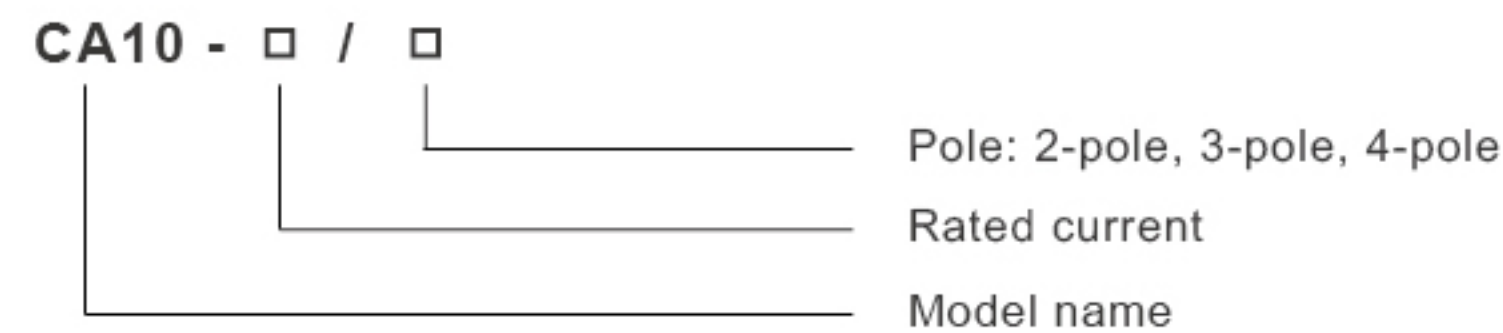
Attention: rotation angle code is 30°(3); 45°(4); 60°(6); 90°(9); 30° spring return 60° locate (36); 45°spring return 90° locate (49)

#### Use as Control Switch



Attention : Motor switches normally rotate at 60°

#### Main Circuit Control Switch



Attention : main circuit control switches normally rotate at 60°

### 3.Working Condition

Recommended Ambient temperature -5℃ to 40℃

Installation altitude: ≤2000m

Relative atmosphere humidity do not exceed 50% when the highest temperature is +40℃. At lower temperature, higher humidity can be allowed. For example, humidity can reach 90% when temperature is 20℃. Special measures should be taken when the congealed dew appears on the surface caused by the change of temperature.

### 4.Features

- Classified by utilization, control and load switch, motor switch, control switch.
- Classified by operation limited movement spring return, limited movement with spring return.
- Classified by contact system switch with limited movement has 1-12 poles (63 A only have 8 poles), switch with spring return has 1-3 poles, motor control switch has 1-6 poles.
- Classified by rotation angle: 30°, 45°, 60°, 90°, etc.
- Classified by panel square panel, rectangular panel, circular panel (only 20A).
- Classified by handle R type, I type, F type, B type, S type, L type, P type, K type.

### 5.Specifications

#### 5.1.Classified by Operation Method and Position of Handle:

Operation	Character code	Position of handle			
Spring return method	A	0° 30°	0° 45°		
	B	30° 0° 30°	45° 0° 45°		
Limited movement	C	0° 30°	0° 45°	0° 60°	0° 90°
	D	30° 0° 30°	45° 0° 45°	60° 0° 60°	90° 0° 90°
	E	30° 0° 30° 60°	45° 0° 45° 90°	90° 30° 30° 90°	90° 0° 90° 180°
	F	60° 30° 0° 30° 60°	90° 45° 0° 45° 90°	90° 30° 30° 90° 150°	
	G	60° 30° 0° 30° 60° 90°	90° 45° 0° 45° 90° 135°	150° 90° 30° 30° 90° 150°	
	H	90° 60° 30° 0° 30° 60° 90°	135° 90° 45° 0° 45° 90° 135°		
	I	90° 60° 30° 0° 30° 60° 90° 120°	135° 90° 45° 0° 45° 90° 135° 180°		
	J	120° 90° 60° 30° 0° 30° 60° 90° 120°			
	K	120° 90° 60° 30° 0° 30° 60° 90° 120° 150°			
	L	150° 120° 90° 60° 30° 0° 30° 60° 90° 120° 150°			
Limited movement with spring return	M	150° 120° 90° 60° 30° 0° 30° 60° 90° 120° 150° 180°			
	N		45° 45°	30° 30°	
	Z	30° 0° 60°	90° 0° 45°		
			135° 90° 0° 45°		

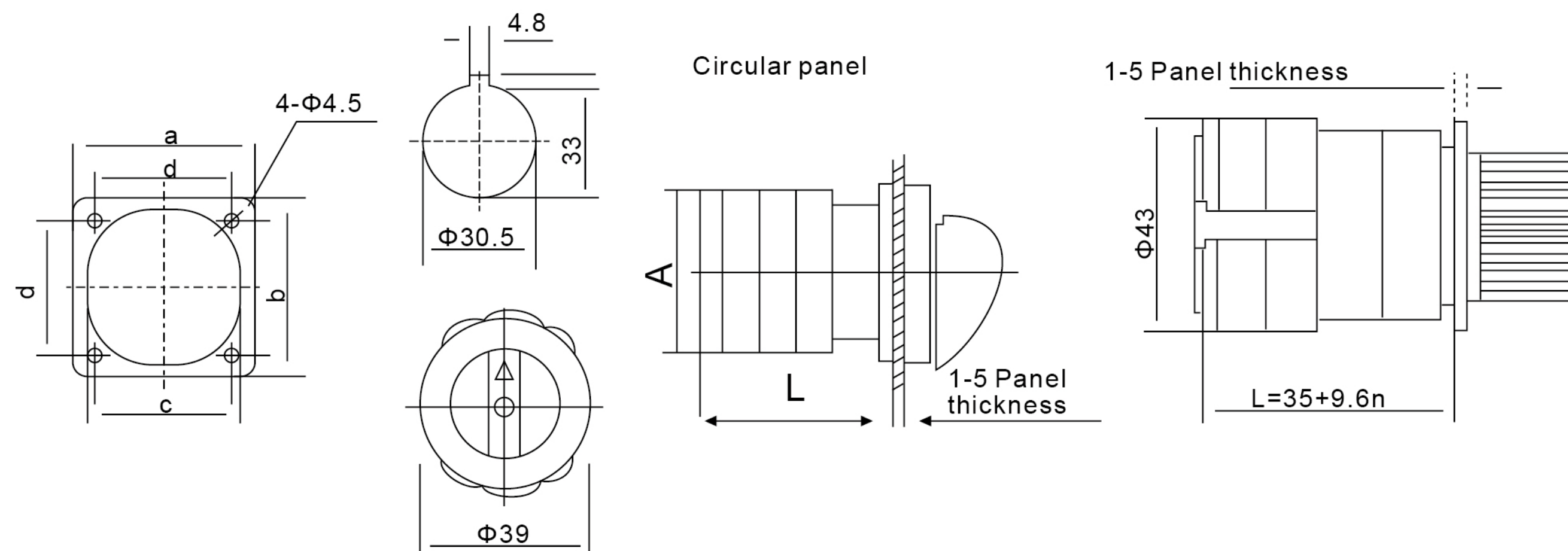


5.2.Parameter:

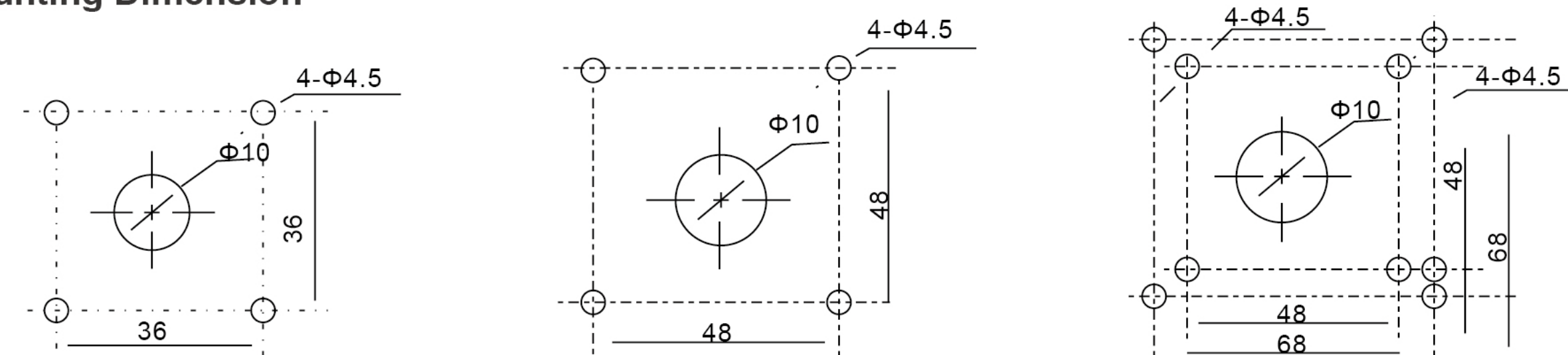
Type	Ith A	Ui V	Ue V	AC-21A le A	AC-22A le A	AC-23A le P A kW	AC-2 le P A kW	AC-3 le P A kW	AC-4 le P A kW	AC-15 le A	DC-13 le A	
CA10-20	20	660	440	20	20	15 7.5	15 7.5	11 5.5	3.5 1.5	4	-	
		660	240							5	1	
		660	120								5	
CA10-25	25	660	440	25	25	22 11	22 11	15 7.5	6.5 3	5	1.5	
		660	240							8		9
		660	120									
CA10-32	32	660	440	32	32	30 15	30 15	22 11	11 5.5	6	11	
		660	240							14		25
		660	120									
CA10-63	63	660	440	63	63	57 30	57 30	36 18.5	15 7.5		55	
		660	120									
CA10-125	125	660	125	125	125	100 45	100 45	50 22	18 12		90	
CA10-160	160	660	160	160	160	115 57	115 57	65 33	25 15		110	
Operation recurrent number		No-load On-load Total				8500 1500 1000					Electrical life 20x10 <sup>4</sup> 6x10 <sup>4</sup> Mechanical life 60x10 <sup>4</sup>	

6.Dimensions

Dimension(see diagram1 and table 3)



Mounting Dimension



a) Small panel mounting dimension(see diagram 2)

b) Large panel mounting dimension(see diagram 3)

c) Larger panel mounting dimension(see diagram 4), you can chose any dimension to install.

Type	Panel configuration	Dimension (mm)				Mounting dimension			
		A	B	C	L	a	b	d1	d2
CA10-20	M1 Square	48	48	43	22+9.6n	36	36	Φ8.5	Φ4.5
	M2 Square	64	64	43	25+9.6n	48	48	Φ10	Φ4.5
CA10-25	M1 Square	48	48	45.2	23+12.8n	36	36	Φ8.5	Φ4.5
	M2 Square	64	64	45.2	26.5+12.8n	48	48	Φ10	Φ4.5
CA10-32	M2 Square	64	64	58	29.2+12.8n	48	48	Φ10	Φ4.5
CA10-63	M2 Square	64	64	66	29.2+21.5n	48	48	Φ10	Φ4.5
	M3 Square	88	88	66	29.2+21.5n	68	68	Φ10	Φ4.5
CA10-125	M3 Square	88	88	84	35+26.5n	68	68	Φ13	Φ 6
CA10-160	M3 Square	88	88	88	35+32.5n	68	68	Φ13	Φ 6



Attention : N – Number of poles

7.Order Note

Following items should be marked when ordering

- Product name and model
- Rated current
- Setting current range
- Quantity

Ordering sample

To order CA10 Universal changover switch, quantity is 1000 pieces, should be marked:  
Universal changover switch CA10 1000pcs.