



Specifications and technical data are subject to change without notice.
Please contact to confirm relevant information on ordering.

📍 No.18, Gutang Rd, Shanghai 201209, China
 ☎️ +86 21 5032 0898
 📠 +86 21 5032 0828
 ✉️ info@ebasee.com
 🌐 www.ebasee.com



Copy right reserved EBS.NO.2021001

Ebasee
Smart Living Green Ebasee



CONTROL ELECTRIC



COMPANY PROFILE

As a leading supplier in the low voltage electrics industry, Shanghai Ebasee Electric Co., Ltd. products have been used for residential, commercial and industrial applications with its quality and service. EBASEE brand is recognized for its quality and reliability in an ever-increasing number of markets worldwide. So far EBASEE products have been approved by international labs including BV, TUV, Intertek, with KEMA, CB, SEMKO, RoHS, CE, and CCC etc.

With qualified raw materials and components supply, all products are manufactured by EBASEE's defined international specifications. We have 4 semi-auto production lines, up-to-date quality control facilities, well-trained and experienced workers. Moreover, with a technical R & D team and fully equipped in-house laboratory, EBASEE factory can carry out efficient new products development, daily production and QC.

EBASEE have a wide range of cooperations with world leading companies in new products development, OEM and ODM cooperation. Meanwhile, we process the idea of green and smart energy, working with universities such as Xi'an Jiao Tong University to get more intelligent and environmental electric solutions.

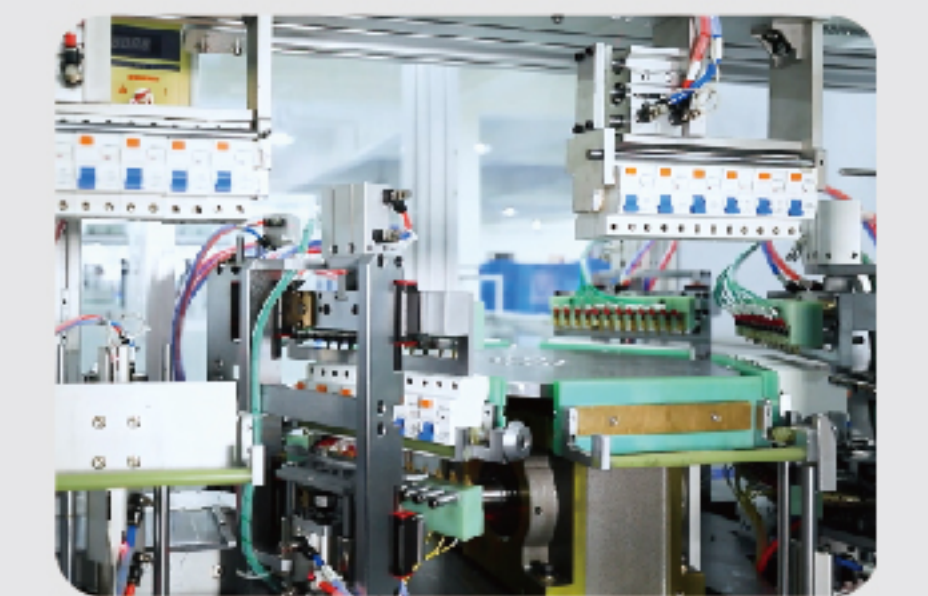
EBASEE focused on achieving growth through the success of worldwide partners. Guided by the philosophy of "market-oriented", powered by the idea of "Quick response and flexible supply", EBASEE support our worldwide partners to compete against established global players, to deliver the most systematic and cost-effective products and service in the market.

"Smart life, Green EBASEE"



Quality is our culture!

PRODUCTION LINE

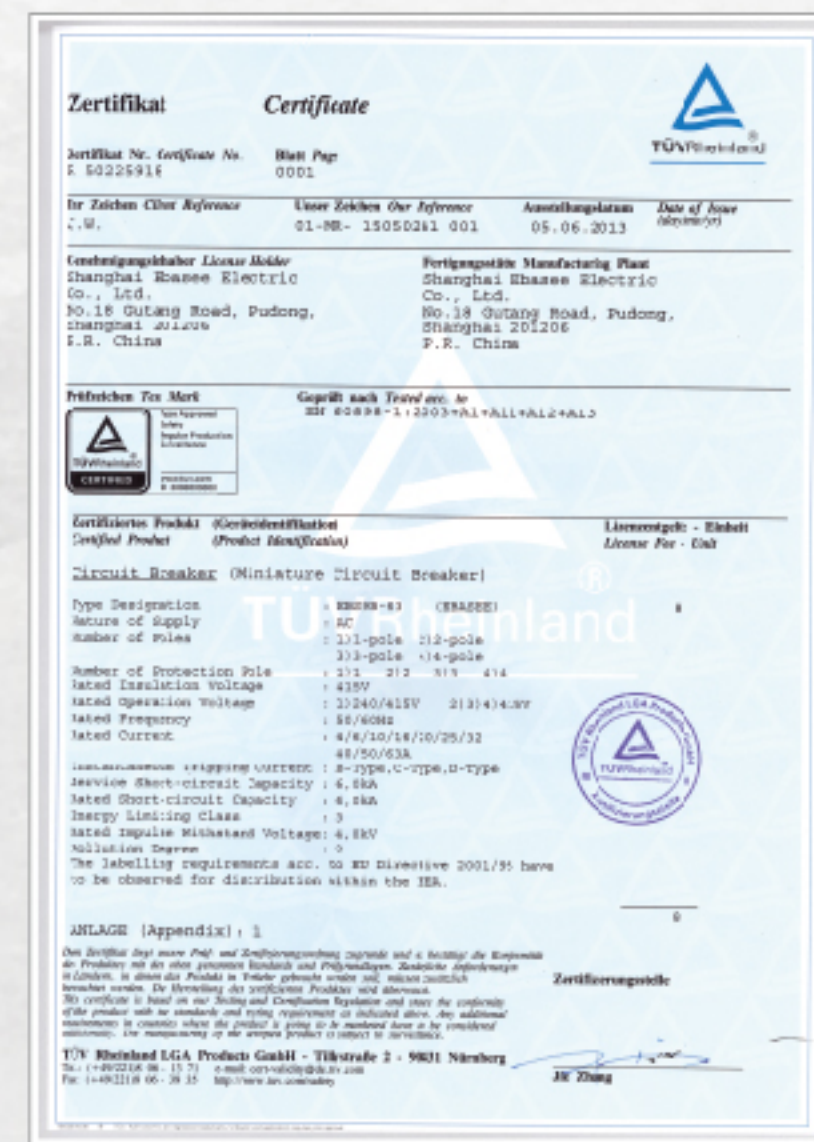
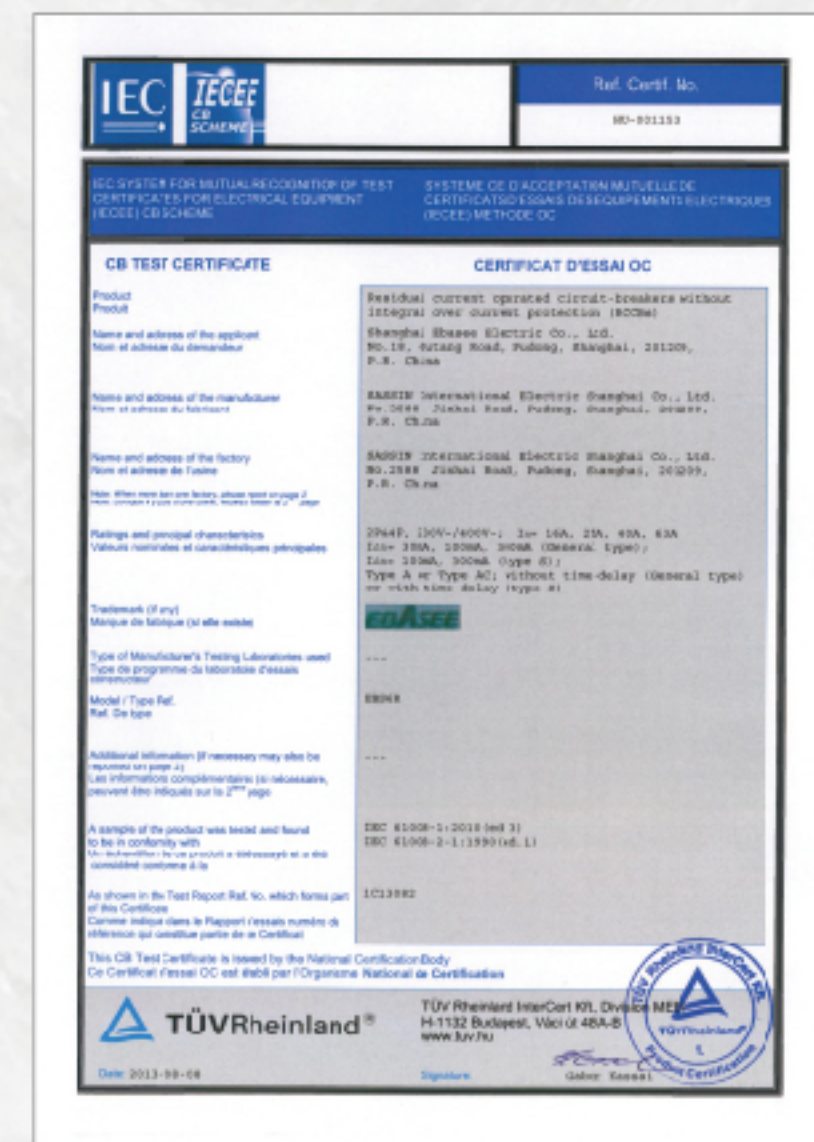
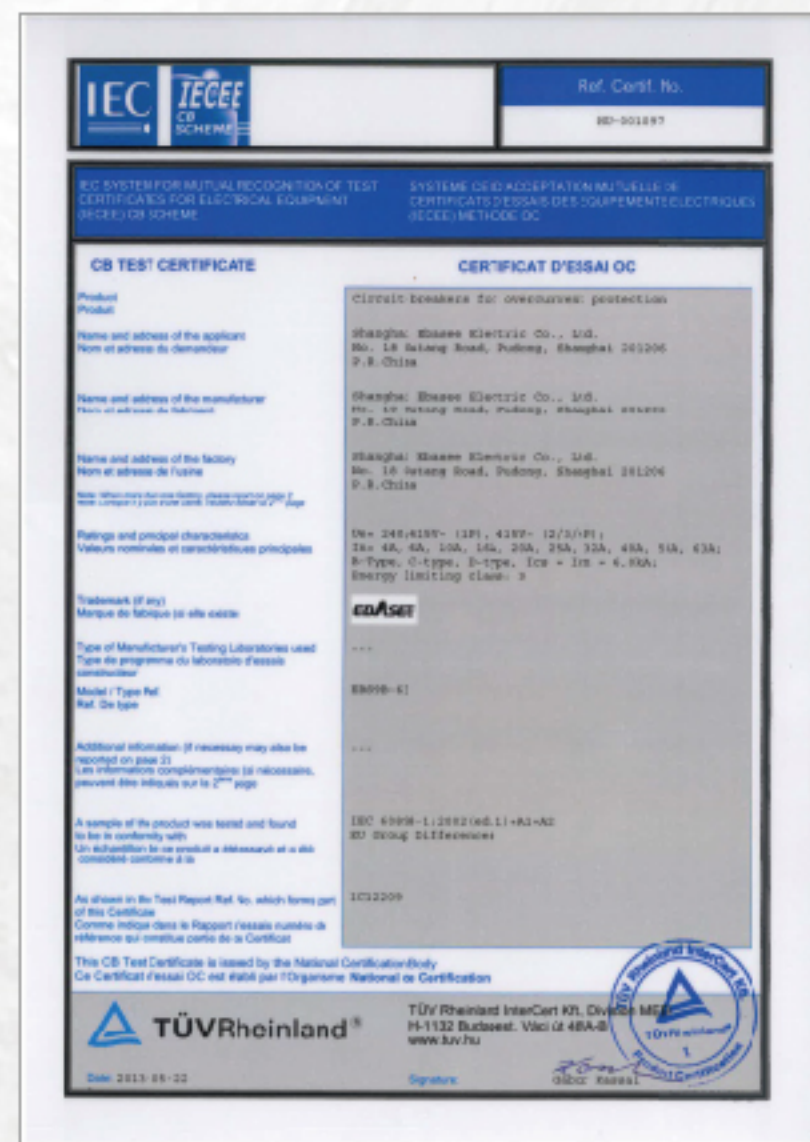
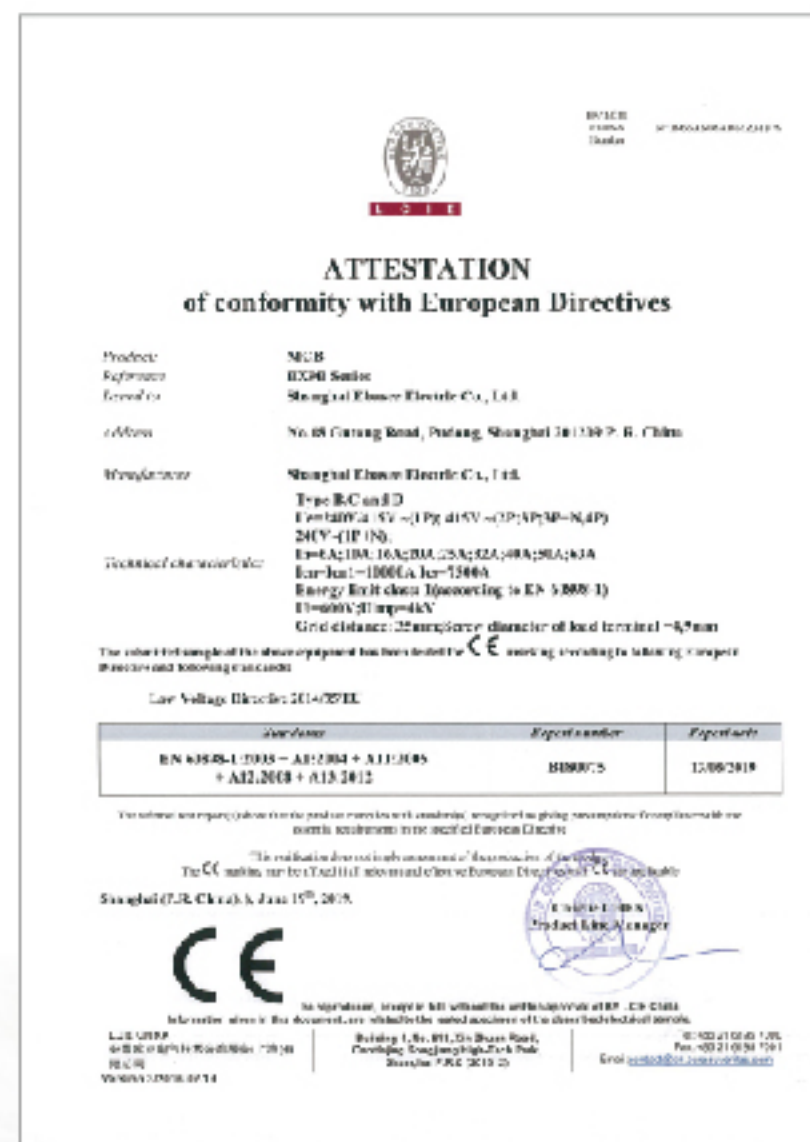


SMART LIVING GREEN EBASEE



INTERNATIONAL QUALITY CERTIFICATE

EBASEE products have been approved by international labs including BV, TÜV, Intertek, with KEMA, CB, SEMKO, RoHS, CE, and CCC etc.



1.General

"This fuse series apply to AC 50Hz,rated voltage to 1140V and rate current to 1250A. It is mainly used for overload and short circuit protection" in electrical devices. It can break any current during the minimum melting current to 120kA reliably. and also be derived for semiconductor devices Its complete sets of equipment of short circuit protection (aR) and motor short circuit protection (aM). This series fuse conforms to IEC60269.

2.Application

This series of fuse bases are used in AC 50Hz,rated voltage up to 690V,rated current up to 1250A and is equipped with fuses for protecting from overload and short-circuit in electric circuit.

3.Structure feature

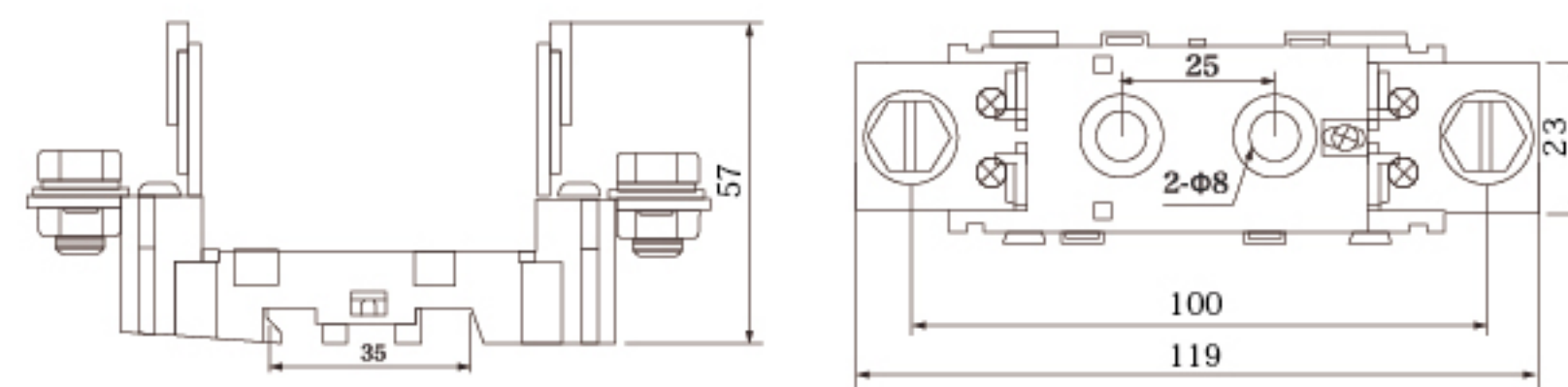
The base adopts high strength ceramic and possesses well enough insulation performance.The open structure is featured with good heat radiating,high mechanical density and simple operation.The outline structure and installation dimension conform to IEC60269,VDE0636 and GB13539.

4.Specifications

4.1.Basic Data

NO.	Model base	Model,size and specification of applicable fuse link	Rated voltage(v)	Rated current(A)	Weight (g)	See figure	Overall dimension (mm)
0401	NH00	NT00 NT00C (RT16-00 RT16-000 NH00)	690	160	110	2.1	Refer to drawing 2.1 for detailed data

Product photo and Dimension

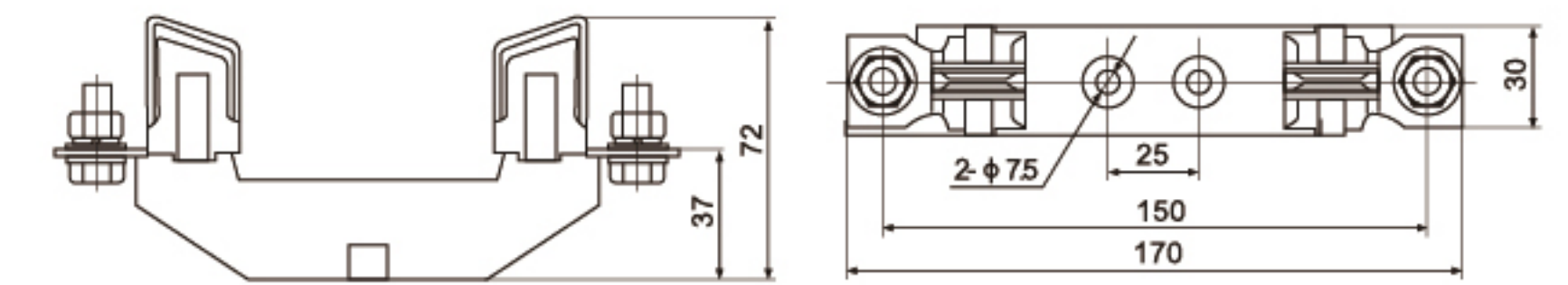


Drawing 2.1

4.2.Basic Data

NO.	Model base	Model,size and specification of applicable fuse link	Rated voltage(v)	Rated current(A)	Weight (g)	See figure	Overall dimension (mm)
0402	RT16-0	RT16-0 NT0 NH0	690	160	295	2.2	Refer to drawing 2.2 for detailed data

Product photo and Dimension

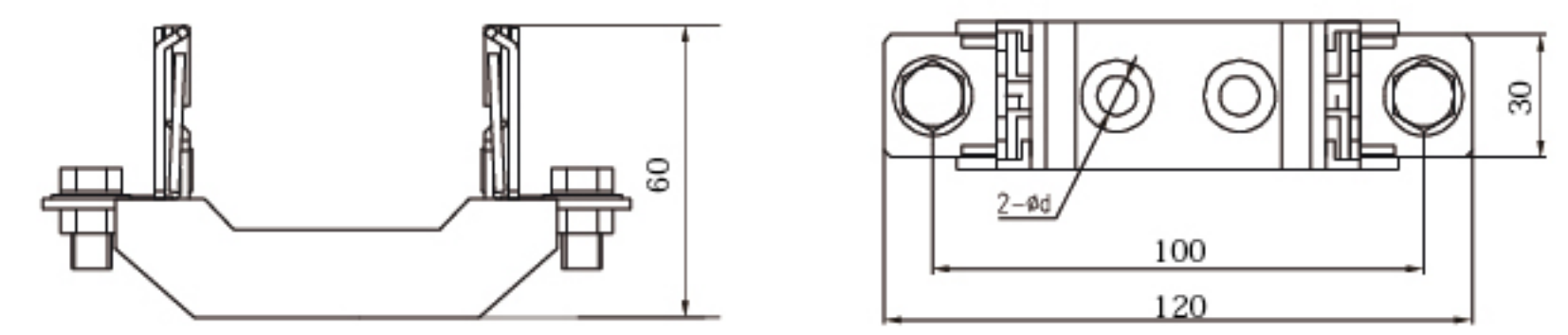


Drawing 2.2

4.3.Basic Data

NO.	Model base	Model,size and specification of applicable fuse link	Rated voltage(v)	Rated current(A)	Weight (g)	See figure	Overall dimension (mm)
0403	RT16-00	RT16-000/00 NT00 NH00C NH00	690	160	193	2.3	Refer to drawing 2.3 for detailed data

Product photo and Dimension

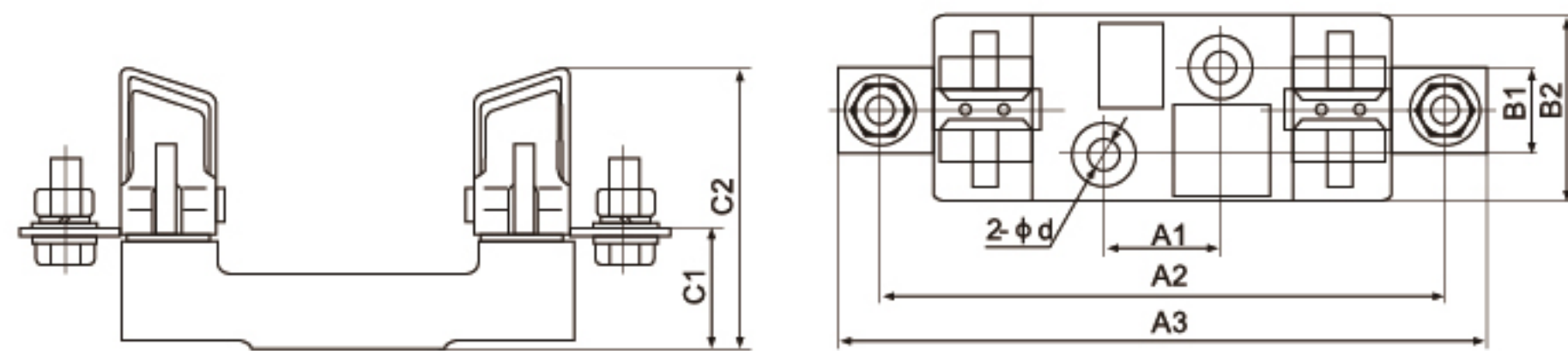


Drawing 2.3

4.4. Basic Data

NO.	Model base	Model, size and specification of applicable fuse link	Rated voltage(v)	Rated current(A)	Weight (g)	See figure	Overall dimension(mm)							
							A ₁	A ₂	A ₃	B ₁	B ₂	C ₁	C ₂	φd
0404	RT16-1	RT16-1 NT1 NH1	690	250	550	2.4	25	175	200	30	58	38	84	10.5
0405	RT16-2	RT16-2 NT2 NH2	690	400	770	2.4	25	200	225	30	60	38	100	10.5
0406	RT16-3	RT16-3 NT3 NH3	690	630	965	2.4	25	210	250	30	60	40	105	10.5

Product photo and Dimension

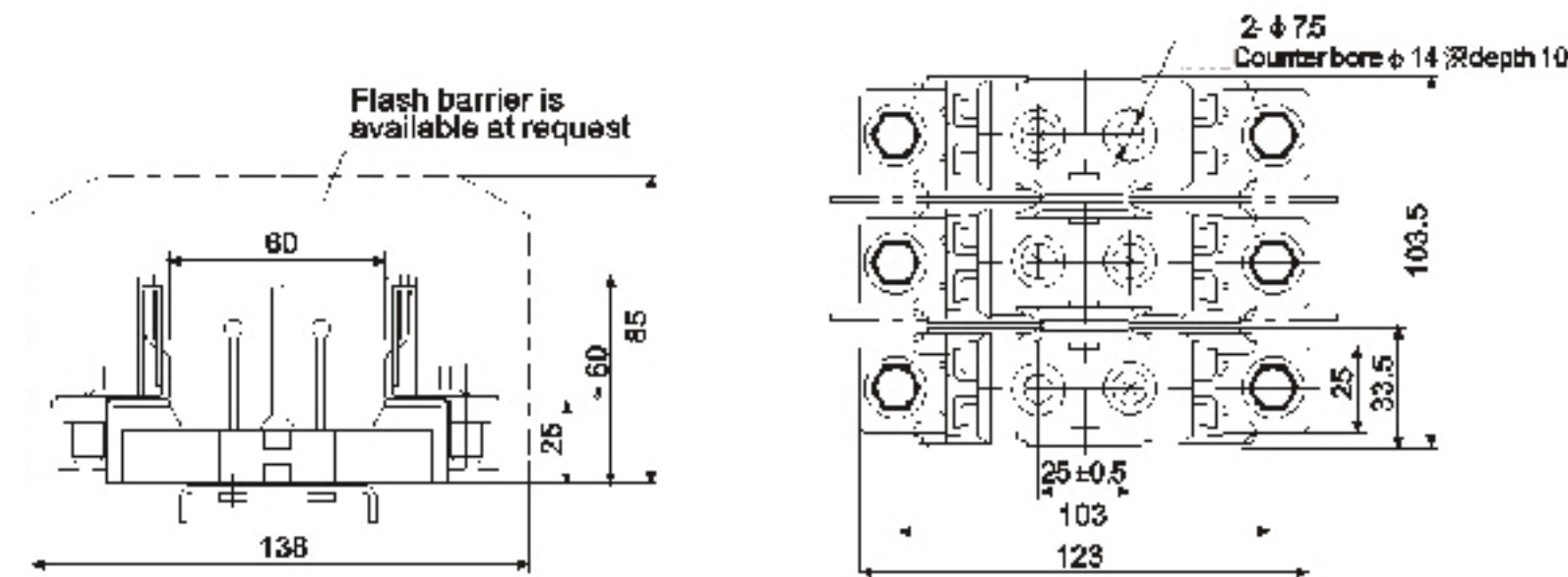


Drawing 2.4

4.5. Basic Data

NO.	Model base	Model, size and specification of applicable fuse link	Rated voltage(v)	Rated current(A)	Weight (g)	See figure	Overall dimension (mm)
0407	NT00S-3J	NT000 NH00 RT16-000/00 NT00C/00	690	160	845	2.5	Refer to drawing 2.5 for detailed data

Product photo and Dimension

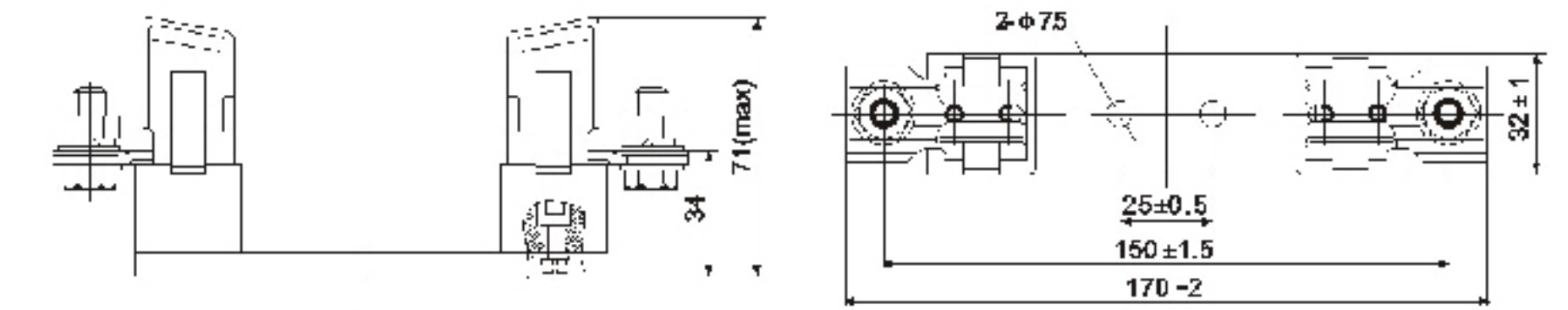
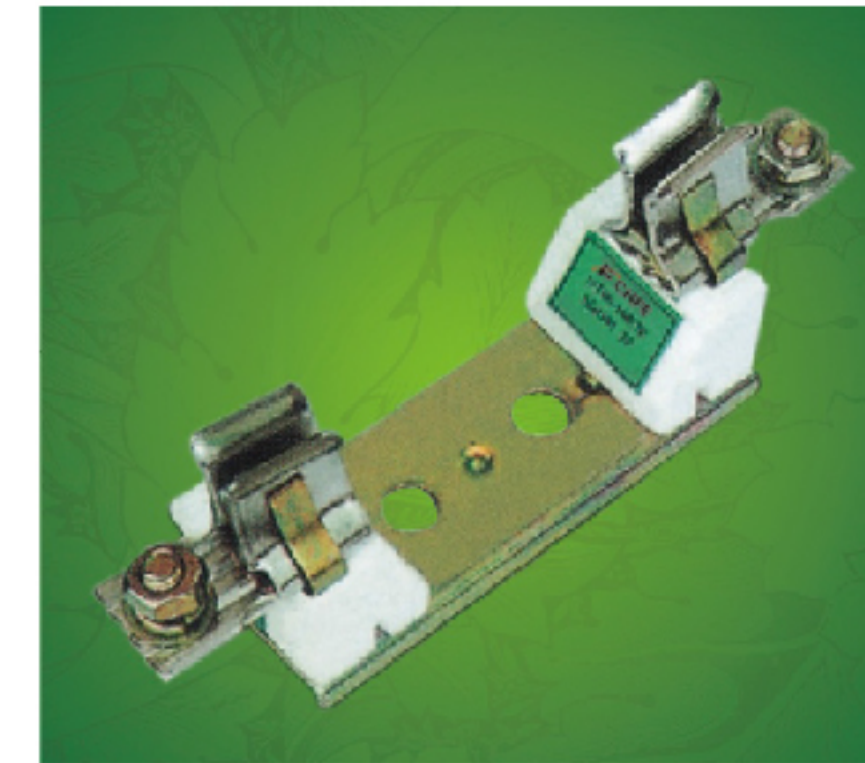


Drawing 2.5

4.6. Basic Data

NO.	Model base	Model, size and specification of applicable fuse link	Rated voltage(v)	Rated current(A)	Weight (g)	See figure	Overall dimension (mm)
0408	NT0S	NH0 NT0 RT16-0	660	160	322	2.6	Refer to drawing 2.6 for detailed data

Product photo and Dimension

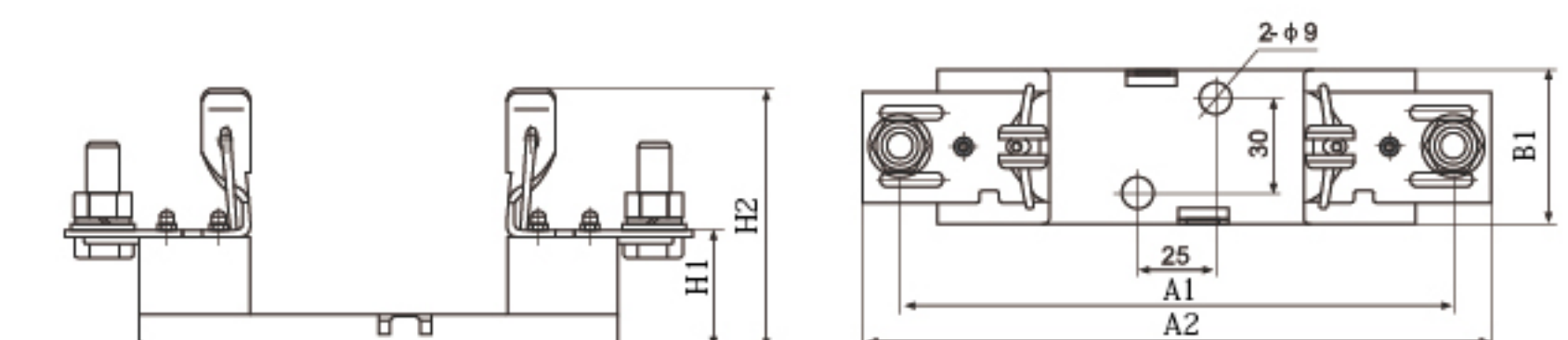


Drawing 2.6

4.7. Basic Data

NO.	Model base	Model, size and specification of applicable fuse link	Rated voltage(v)	Rated current(A)	Weight (g)	See figure	Overall dimension(mm)				
							A ₁	A ₂	B ₁	H ₁	H ₂
0409	NT1S	RT16-1 NT1 NH1	660	250	640	2.7	175	200	50	38	82
0410	NT2S	RT16-2 NT2 NH2	660	400	1006	2.7	200	230	64	54	104
0411	NT3S	RT16-3 NT3 NH3	660	630	1200	2.7	210	250	64	54	120

Product photo and Dimension

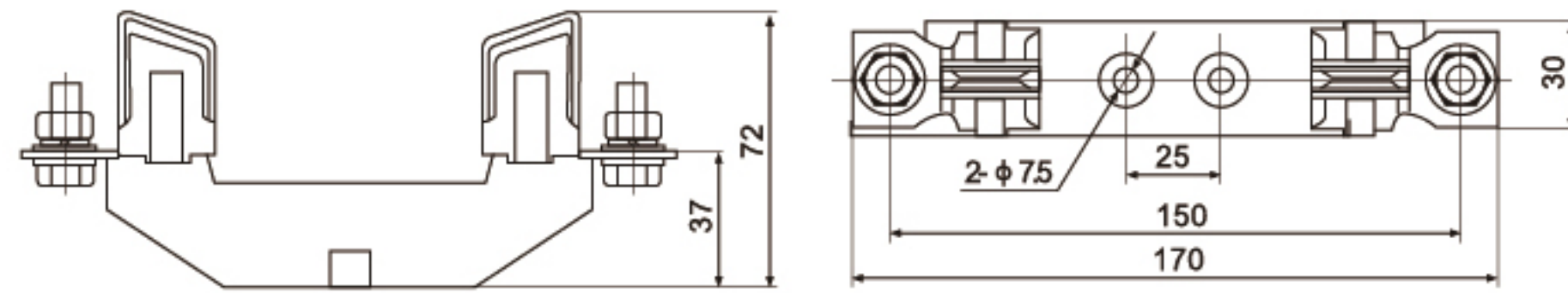


Drawing 2.7

4.8. Basic Data

NO.	Model base	Model, size and specification of applicable fuse link	Rated voltage(v)	Rated current(A)	Weight (g)	See figure	Overall dimension (mm)
0417	RT16-0	RT16-0 NT0 NH0	690	160	295	2.8	Refer to drawing 2.8 for detailed data

Product photo and Dimension

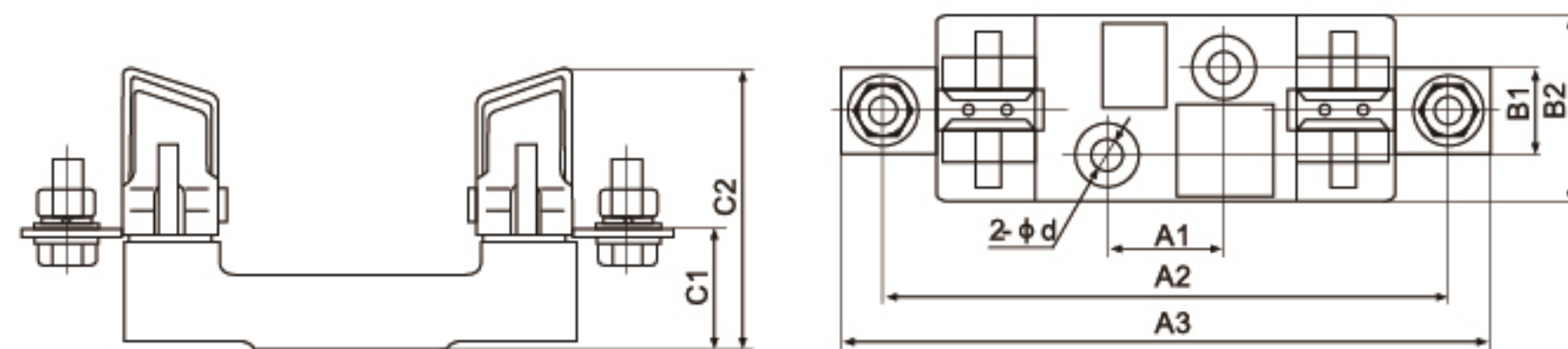


Drawing 2.8

4.9. Basic Data

NO.	Model base	Model, size and specification of applicable fuse link	Rated voltage(v)	Rated current(A)	Weight (g)	See figure	Overall dimension(mm)							
							A ₁	A ₂	A ₃	B ₁	B ₂	C ₁	C ₂	φd
0418	RT16-1	RT16-1 NT1 NH1	690	250	550	2.9	25	175	200	30	58	38	84	10.5
0419	RT16-2	RT16-2 NT2 NH2	690	400	770	2.9	25	200	225	30	60	38	100	10.5
0420	RT16-3	RT16-3 NT3 NH3	690	630	965	2.9	25	210	250	30	60	40	105	10.5

Product photo and Dimension

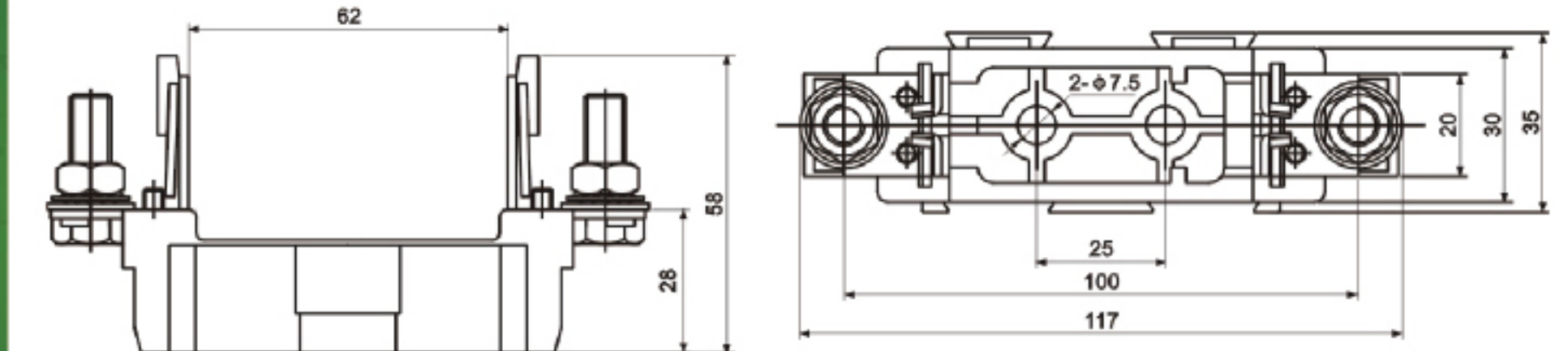


Drawing 2.9

4.10. Basic Data

NO.	Model base	Model, size and specification of applicable fuse link	Rated voltage(v)	Rated current(A)	Weight (g)	See figure	Overall dimension (mm)
0421	NH00	NH00C NH00	690	160	110	2.10	Refer to drawing 2.10 for detailed data

Product photo and Dimension

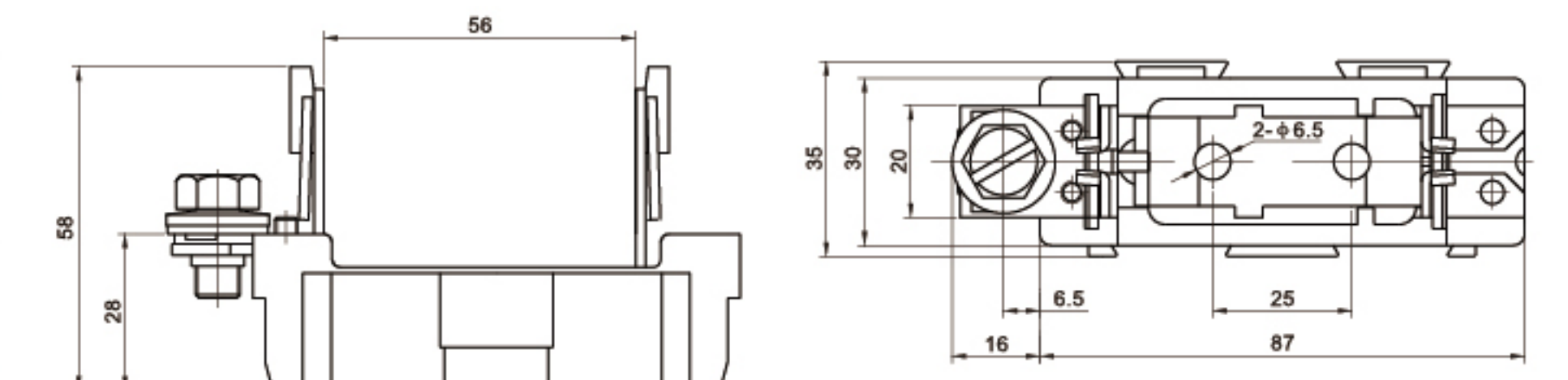


Drawing 2.10

4.11. Basic Data

NO.	Model base	Model, size and specification of applicable fuse link	Rated voltage(v)	Rated current(A)	Weight (g)	See figure	Overall dimension (mm)
0422	NH00	NH00C NH00	690	160	92	2.11	Refer to drawing 2.11 for detailed data

Product photo and Dimension

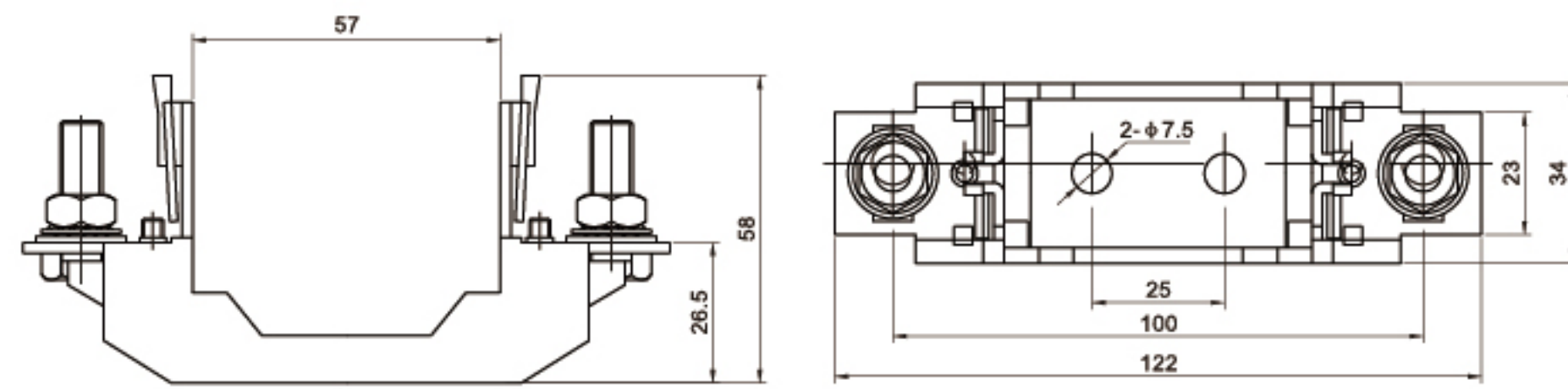


Drawing 2.11

4.12. Basic Data

NO.	Model base	Model, size and specification of applicable fuse link	Rated voltage(v)	Rated current(A)	Weight (g)	See figure	Overall dimension (mm)
0423	NH00	NH00C NH00	690	160	120	2.12	Refer to drawing 2.12 for detailed data

Product photo and Dimension



Drawing 2.12

5. Order Note

Following items should be marked when ordering	Ordering sample
Product name and model	To order EBS1TR-F thermal relay, rated current is 25A, setting current range is 18A, quantity is 1000 pieces, should be marked:
Rated current	
Setting current range	Thermal relay EBS1TR-F-25/18 1000pcs
Quantity	