



Specifications and technical data are subject to change without notice.  
Please contact to confirm relevant information on ordering.

📍 No.18, Gutang Rd, Shanghai 201209, China  
 ☎️ +86 21 5032 0898  
 📠 +86 21 5032 0828  
 ✉️ info@ebasee.com  
 🌐 www.ebasee.com



Copy right reserved EBS.NO.2021001

**Ebasee**  
Smart Living Green Ebasee



**CIRCUIT BREAKER**



# COMPANY PROFILE

As a leading supplier in the low voltage electrics industry, Shanghai Ebasee Electric Co., Ltd. products have been used for residential, commercial and industrial applications with its quality and service. EBASEE brand is recognized for its quality and reliability in an ever-increasing number of markets worldwide. So far EBASEE products have been approved by international labs including BV, TUV, Intertek, with KEMA, CB, SEMKO, RoHS, CE, and CCC etc.

With qualified raw materials and components supply, all products are manufactured by EBASEE's defined international specifications. We have 4 semi-auto production lines, up-to-date quality control facilities, well-trained and experienced workers. Moreover, with a technical R & D team and fully equipped in-house laboratory, EBASEE factory can carry out efficient new products development, daily production and QC.

EBASEE have a wide range of cooperations with world leading companies in new products development, OEM and ODM cooperation. Meanwhile, we process the idea of green and smart energy, working with universities such as Xi'an Jiao Tong University to get more intelligent and environmental electric solutions.

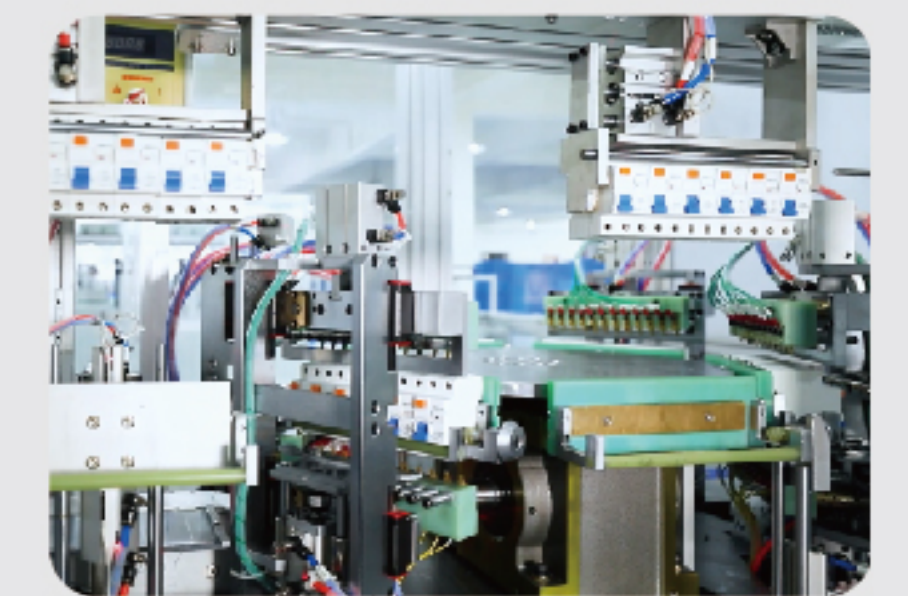
EBASEE focused on achieving growth through the success of worldwide partners. Guided by the philosophy of "market-oriented", powered by the idea of "Quick response and flexible supply", EBASEE support our worldwide partners to compete against established global players, to deliver the most systematic and cost-effective products and service in the market.

"Smart life, Green EBASEE"



Quality is our culture!

## PRODUCTION LINE

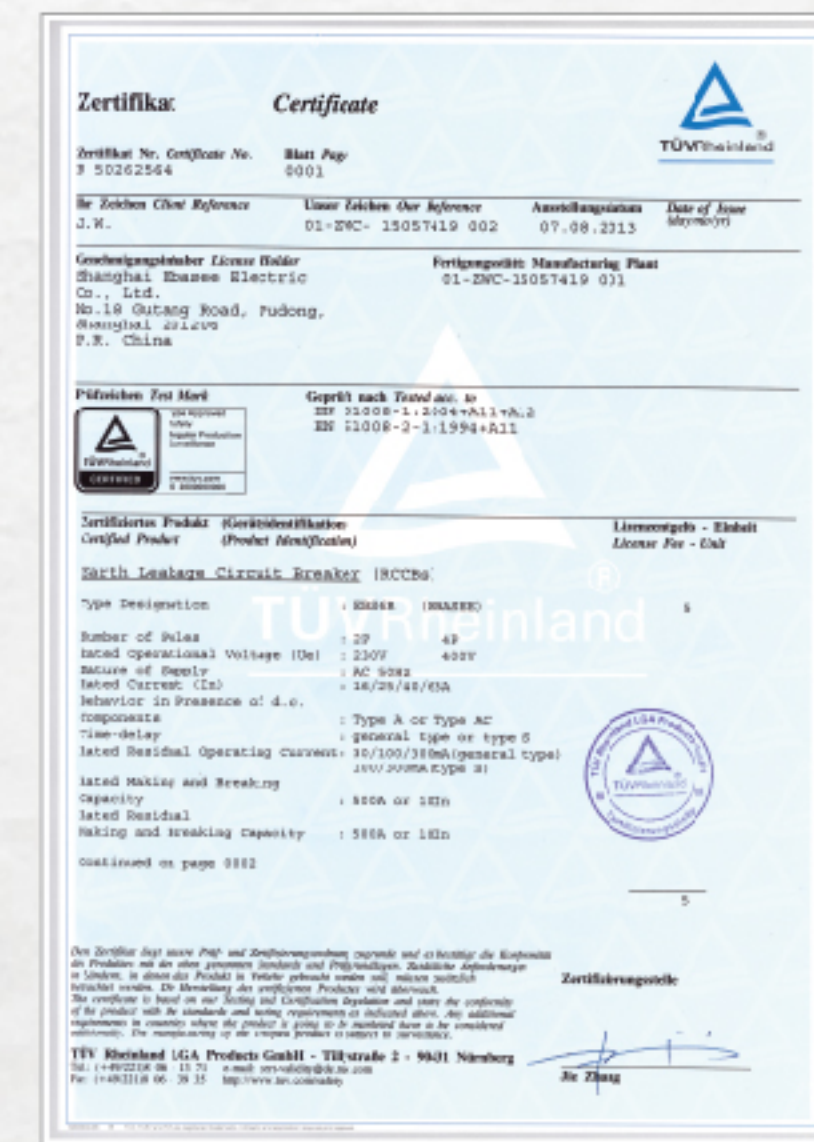
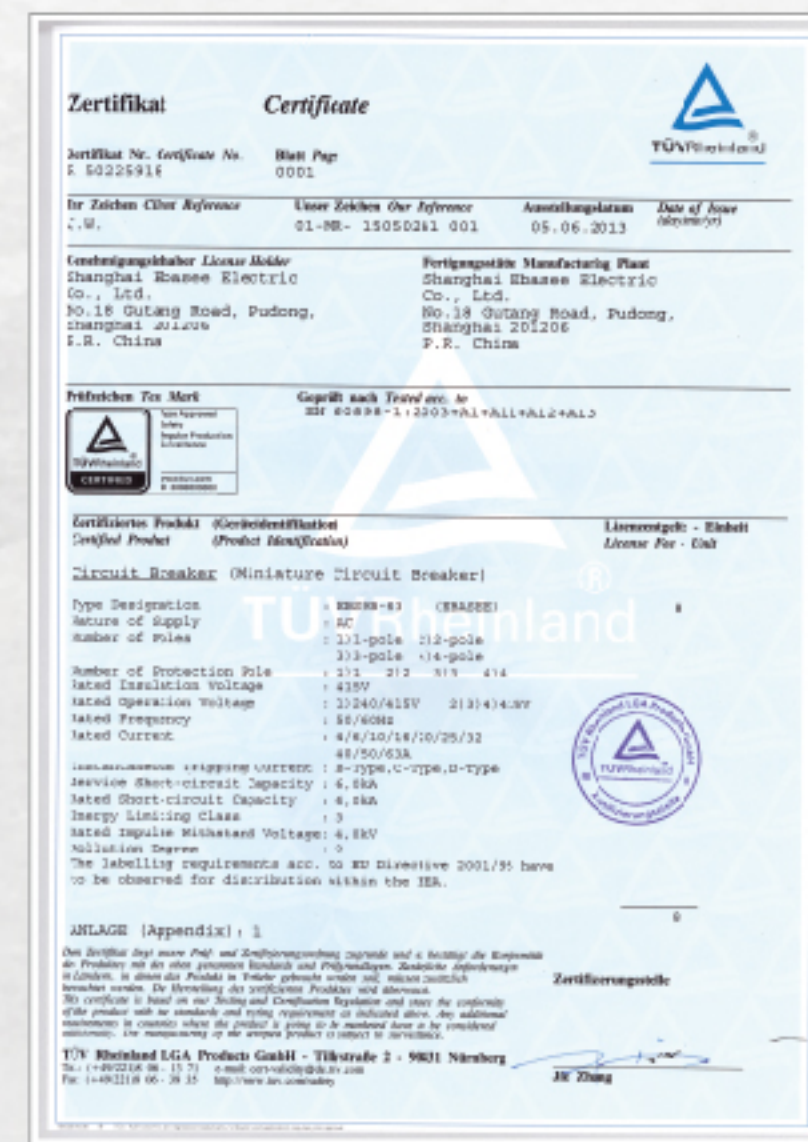
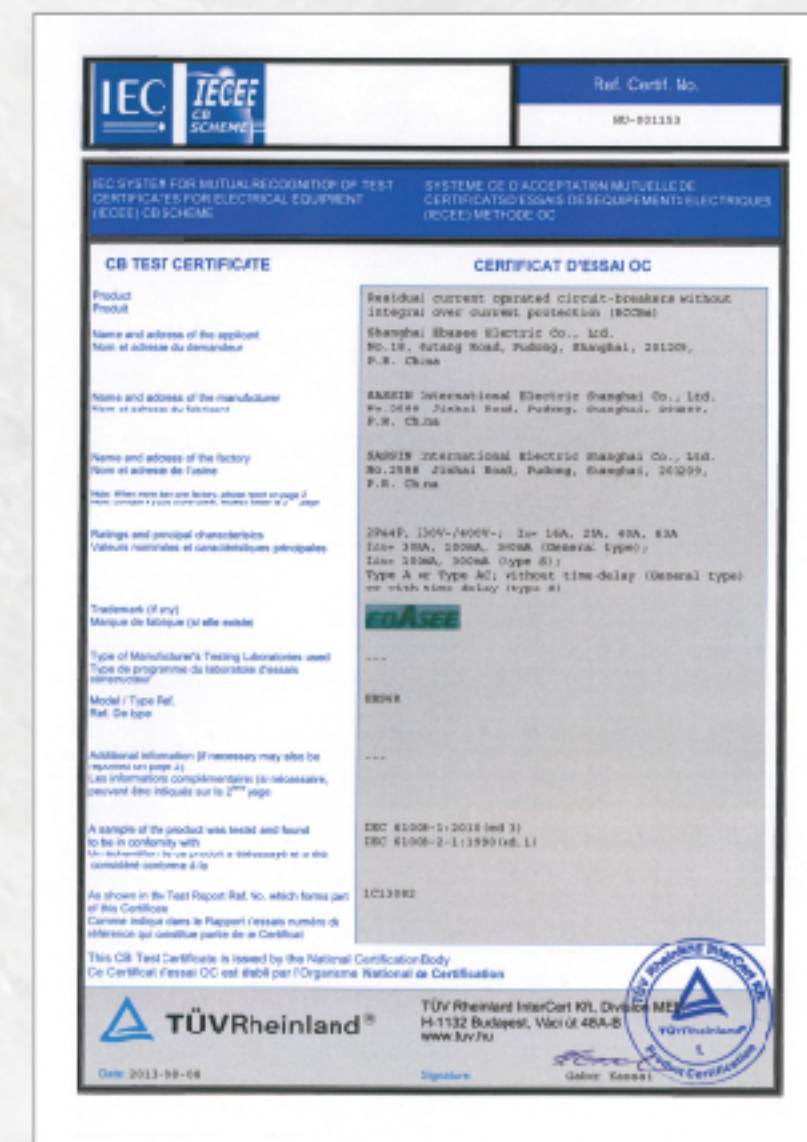
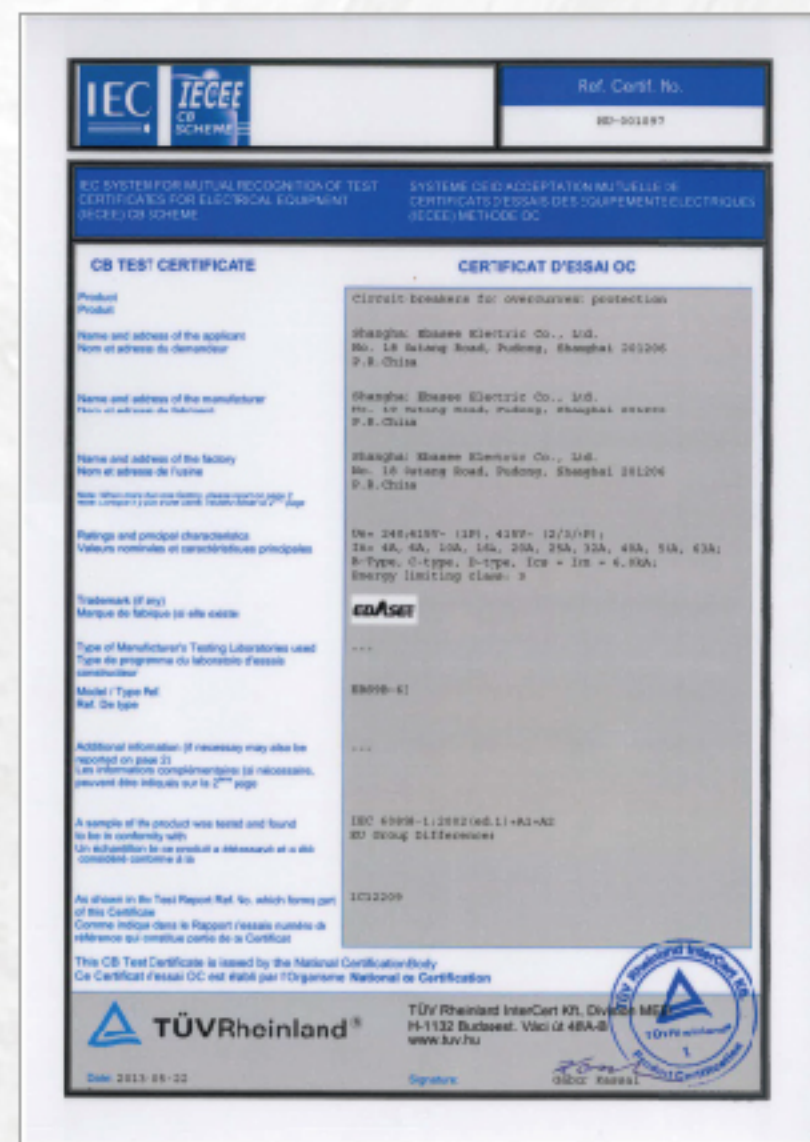


# SMART LIVING GREEN EBASEE



## INTERNATIONAL QUALITY CERTIFICATE

EBASEE products have been approved by international labs including BV, TUV, Intertek, with KEMA, CB, SEMKO, RoHS, CE, and CCC etc.

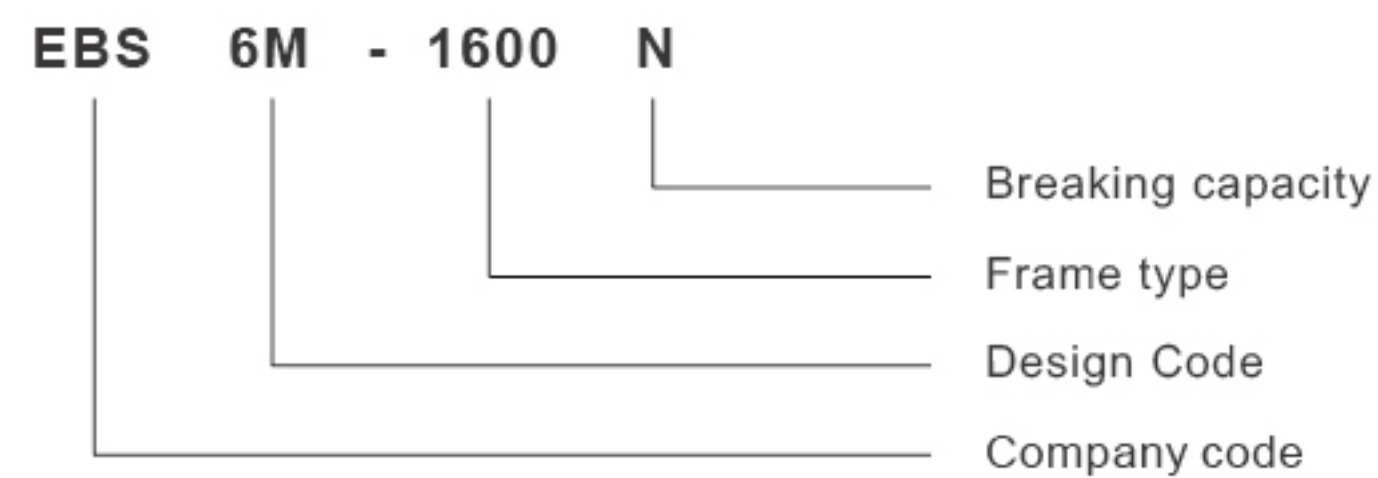


## 1.General

EBS6M series moulded case circuit breaker is one of breaker which adopts international advanced design,manufacture technology to develop,The rated insulating voltage is 750V,suitable for AC50/60Hz, rated working voltage 690V or below, rated working current is 12.5A to 1600A of circuit and used in distributing electric energy, and non-frequent breaking in the normal conditions, protecting the circuit & equipment from overload & under voltage, circuit breaker with rated frame current 400A or below, can be used in mousecage motor's non-frequent start, breaking during working, protecting motor from overload, short circuit & undervoltage, the product conforms to IEC60947-2 standard.



## 2.Nomenclature



## 3.Specifications

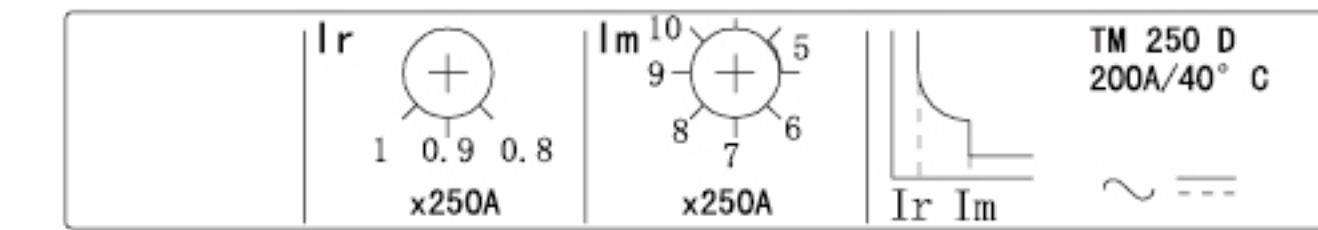
Type	Pole	Rated insulating voltage (V)	Rated operating voltage (V)	Rated ultimate short circuit breaking capacity Icu(KA)at380/415V	Rated service short circuit breaking capacity Ics(KA)at380/415V	Operation performance		Utilization category
						ON	OFF	
EBS6M-100N	1,3,4 pole	750	690 or below	25	25	1500	8500	A
EBS6M-100H				70	70			
EBS6M-100L				150	150			
EBS6M-160N				36	36	1000	7000	
EBS6M-160H				70	70			
EBS6M-160L				150	150			
EBS6M-250N	3,4 pole	750	690 or below	36	36	1000	7000	A
EBS6M-250H				70	70			
EBS6M-250L				150	150			
EBS6M-400N				45	45	1000	4000	
EBS6M-400H				70	70			
EBS6M-400L				150	150			
EBS6M-630N	3 pole	750	690 or below	45	45	1000	4000	A
EBS6M-630H				70	70			
EBS6M-630L				150	150			
EBS6M-1250N				50	37.5	1000	4000	
EBS6M-1600N	50	37.5						

Note: 1. The N-pole breaker has no protection which closing and opening with the other three poles.

2. The type of thermal magnetic for EBS6M-400/630 has no four poles.

## 4.Trip Units

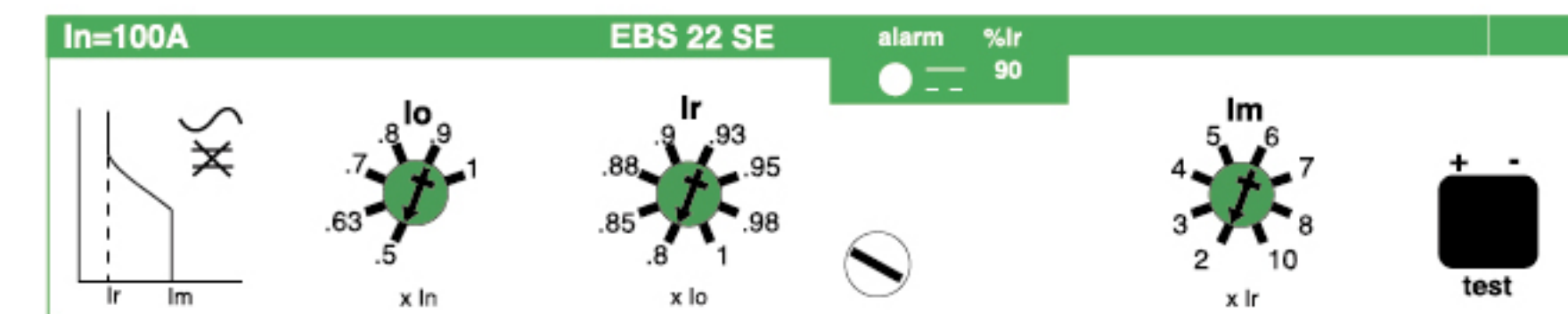
Thermal magnetic release



Type	Rated current In(A)	Note
EBS6M-100	12.5, 16, 20, 25, 32, 40, 50, 63, 80, 100	T adjustable(0.8~1In) M adjustable(5~10In)
EBS6M-160	16, 20, 25, 32, 40, 50, 63, 80, 100, 125, 160	
EBS6M-250	160, 180, 200, 225, 250	
EBS6M-400	315, 350, 400	
EBS6M-630	400, 500, 630,	
EBS6M-1250	80, 010, 001, 250	
EBS6M-1600	100, 012, 501, 600	

## Electronic Release

EBS6M 22SE: protection of low-voltage distribution networks for EBS6M-100/160/250



- Overload protection with adjustable threshold
- Short-circuit protection with adjustable threshold
- Load indication: light at 90% of Ir setting threshold;



EBS6M-250N/4P

Flashing at 105% or more of Ir setting threshold

Type	Rated current In(A)	Note
EBS6M-100	40, 100	Ir=0.4...1*In(adjustable 48 setting) Tripping between 1.05...1.3*Ir(IEC60947-2) (Long-time overload protection) Im=2-3-4-5-6-7-8-10*Ir (short-circuit protection)
EBS6M-160	40, 100, 160	
EBS6M-250	40, 100, 160, 250	



1. Overload protection with adjustable threshold, as defined by IEC60947-4(2) tripping class 10A, 10 and 20
2. Short-circuit protection with adjustable threshold ( $6 \dots 13 \cdot I_r$ )
3. Phase failure protection (built-in electronic release: operates unbalanced single-phase current at 40% and more than) (tripping time delay  $4s \pm 10\%$ ), as defined by IEC60947-4.1
4. Load indication: Flashing more than  $I_r$  setting threshold
5. Fault indication

LEDs indicate the type of fault that caused tripping

Overload (LT protection) or abnormal component temperature ( $> I_r$ );

Short-circuit (ST or instantaneous protection) ( $> I_m$ );

Phase failure (right LED);

Microprocessor malfunction ( $> I_r$ ) ( $> I_m$ ) and phase failure LEDs all go on)

Battery powered. Spare battery are supplied in an adapter box. When a fault occurs, the LED indicating the type of fault, lights for about 10 minutes. The information is however stored in memory.

The LED can be illuminated by pressing the test pushbutton. The LED automatically goes off and memory is cleared when the circuit breaker is reset.

Type	Rated current $I_n$ (A)	Note
EBS6M-400	400	$I_r = 0.4 \dots 1 \cdot I_n$ (adjustable 48 setting) Trip degree: class 10A, 10.20 (IEC60947-4) (Long-time overload protection) $I_m = 6-7-8-9-10-11-12-13 \cdot I_r$ (short-circuit protection)
EBS6M-630	630	

## 5. Accessories

Accessories	Rated operating voltage	Consumption		For type
		Pick-up	Seal-in	
Shunt release (MX)	24V	<10VA	<5VA	EBS6M-100~630
	100V			
	220/230V			
	380/400V			
Under-voltage release (UN)	220/230V	<10VA	<5VA	EBS6M-100~630
	380/400V			



Under-voltage release  
Shunt release

Accessories	Rated operating voltage	Rated operating current		For type
		AC12	AC15	
Auxiliary contact (OF)	380/400V	6	3	EBS6M-100~630
Alarm contact (AL)	380/400V	6	3	



Auxiliary contact  
Alarm contact

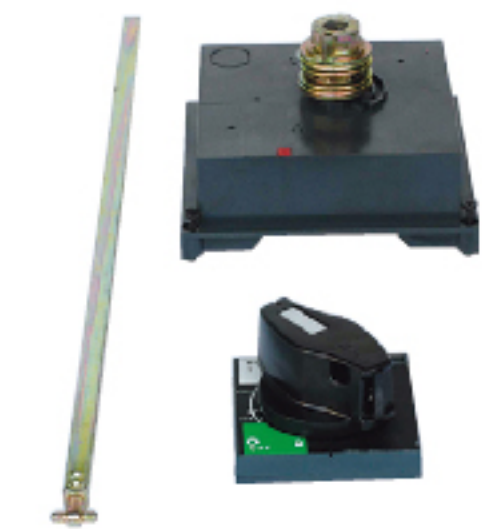
## Rotary Handle

### Direct rotary handle

Degree of protection: IP40

#### Function:

- (1) suitability for isolation
- (2) indication of three positions o(off)l(on)and tripped
- (3) press "push to trip" button, can trip-free
- (4) visibility of and access to trip unit settings
- (5) the circuit breaker can be locked in the off position by one to three padlocks, diameter 5 to 8mm (not supplied)



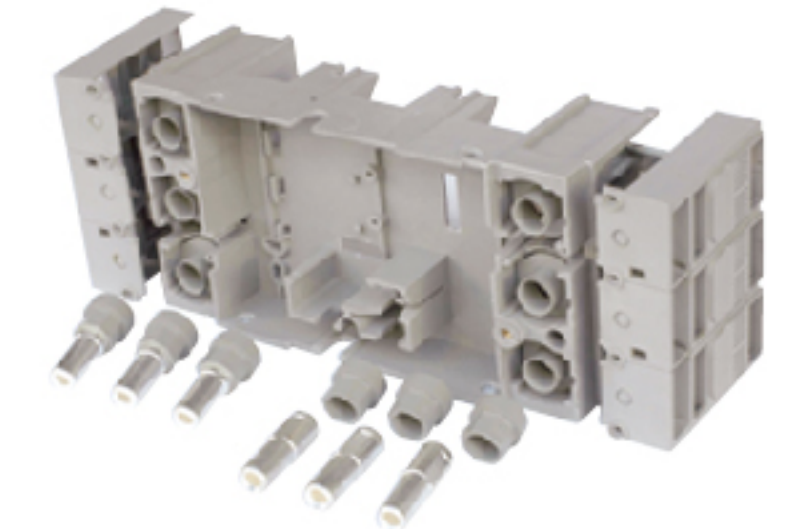
Rotary handle

### Extended rotary handle

Degree of protection: IP55

#### Function:

- (1) Suitability for isolation
- (2) Indication of three positions o(off)l(on)and tripped
- (3) Visibility of and access to trip unit settings when the door is open
- (4) Door opening prevented when circuit breaker is on
- (5) The circuit breaker can be locked in the off position by one to three padlocks, diameter 5 to 8mm (not supplied). locking prevents opening of the switchboard door



plug-in base

## 6. Installation

Circuit breaker may be mounted vertically, horizontally or flat on their back without any derating of characteristics.

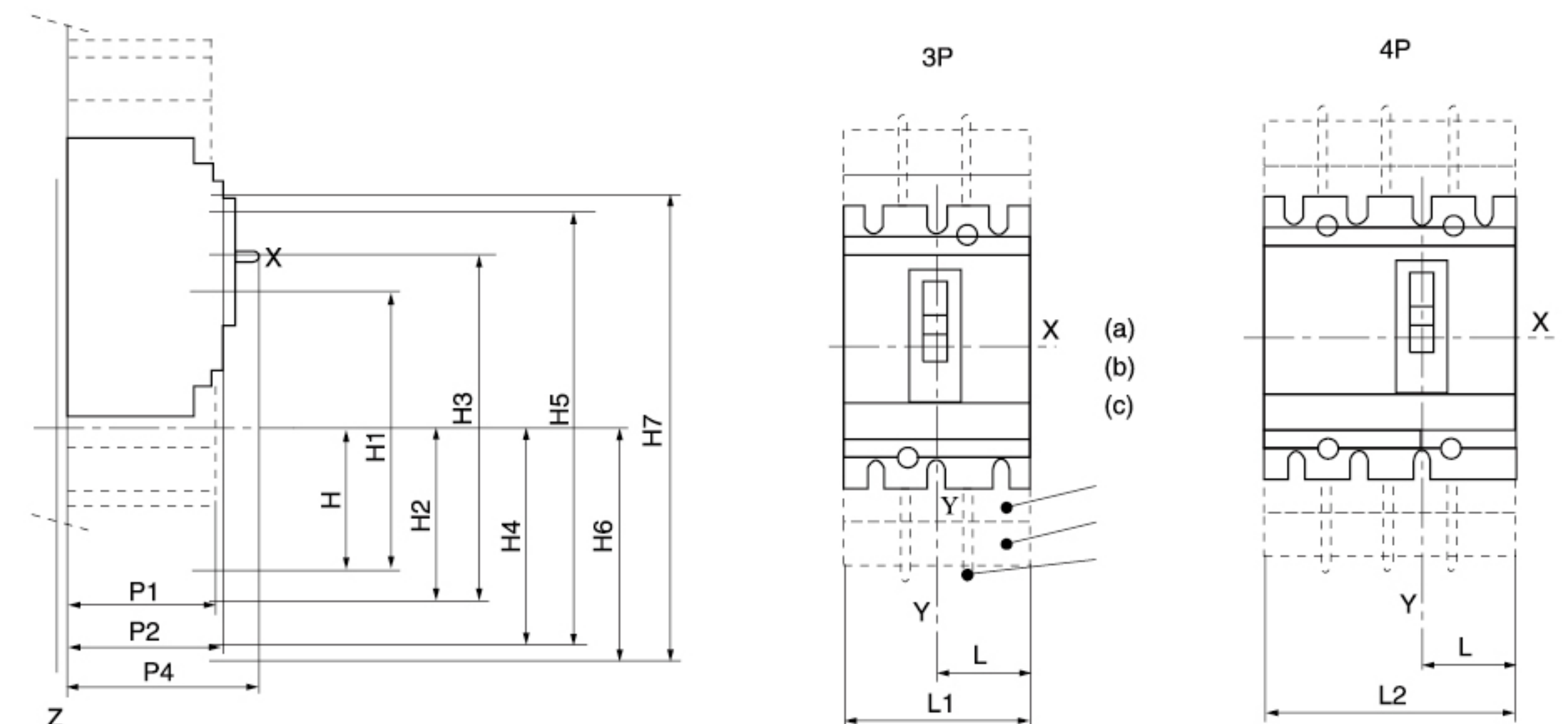
## 7. Fix

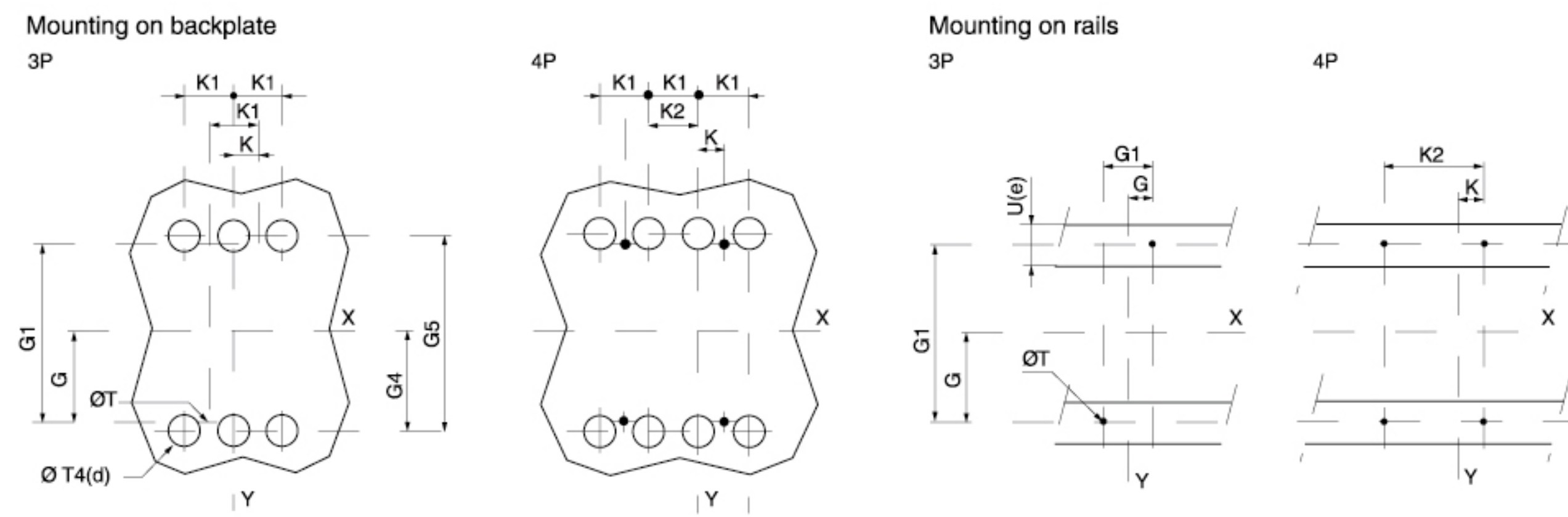
Mounting on backplate, mounting on rails

## 8. Fix: Connection

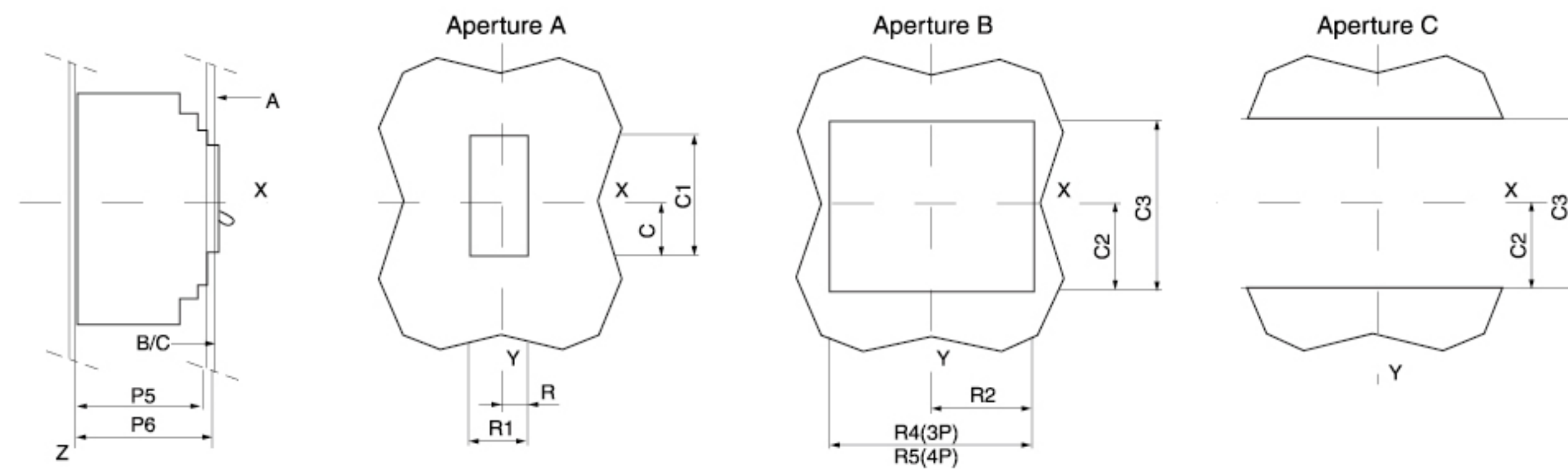
Front panel connection, back panel connection, plug-in connection

## 9. Dimensions





**Aperture on a front panel**  
Fitting to fixed and plug-in circuit breaker



**EBS6M-100~630**

mm	C	C1	C2	C3	G	G1	G4	G5	H	H1	H2
EBS6M 100/160/250N/H/L	29	76	54	108	62.5	125	70	140	80.5	161	94
EBS6M 400/630N/H/L	41.5	116	92.5	184	100	200	113.5	227	127.5	255	142.5
EBS6M 1250/1600N									100	255	

mm	H3	H4	H5	H6	H7	K	K1	K2	L	L1	L2	P1	P2	P4	P5
EBS6M 100/160/250N/H/L	188	160.5	321	178.5	357	17.5	35	70	52.5	105	140	81	86	111	83
EBS6M 400/630N/H/L	285	240	480	237	474	22.5	45	90	70	140	185	95.5	110	168	107
EBS6M 1250/1600N						99.5	199	209	99.5	199	269	107.5		205	

mm	P6	R	R1	R2	R4	R5	ØT	ØT4	(Ue)
EBS6M 100/160/250N/H/L	88	14.5	29	54	108	143	6	22	≤32
EBS6M 400/630N/H/L	112	31.5	63	71.5	143	188	6	32	≤32
EBS6M 1250/1600N							6.5		